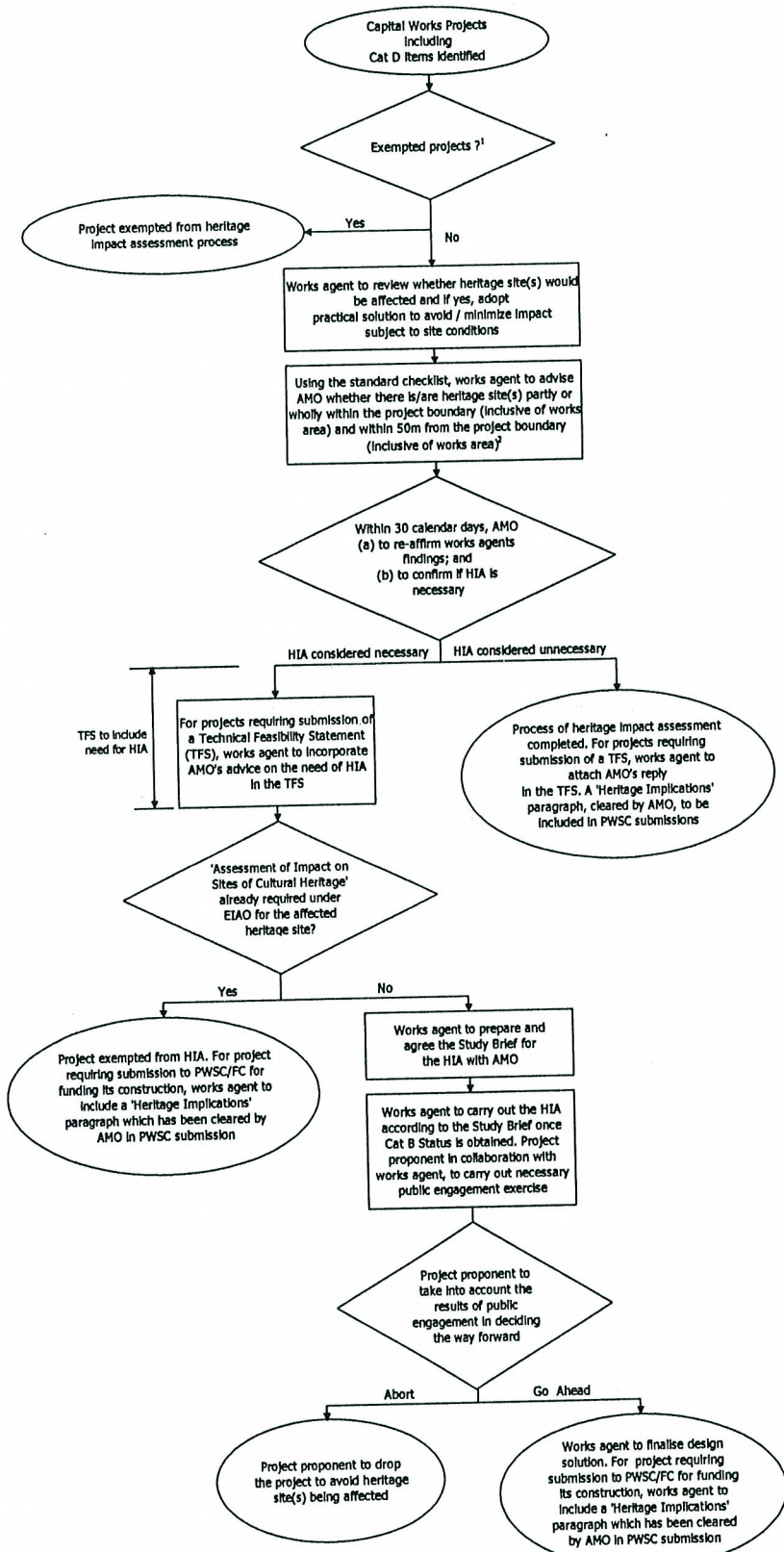


**Flow Chart Showing Determination of the Necessity of Heritage Impact Assessment (HIA) for Capital Works Projects (Including Cat D Items)**



Remarks:  
1

- Exempted projects include:
- (a) Routine maintenance / minor repair works;
  - (b) The following Category D items within an existing building being not a monument or graded building :
    - (i) alteration & addition works;
    - (ii) refurbishment works;
    - (iii) Improvement works; and
    - (iv) fitting out works;
  - (c) The following Category D items within Government open spaces and parks with no declared monuments, proposed monuments or graded historic buildings inside :
    - (i) alteration & addition works;
    - (ii) refurbishment works; and
    - (iii) Improvement works
  - (d) Non-works items such as purchase of property and consultancy study; and
  - (e) Emergency repair works

- 2 For the following HAD Category D projects, discretion is given to HAD on the submission of checklist to AMO if no heritage site is partly or wholly within the project boundary (inclusive of works area) and within 50m from the project boundary (inclusive of works area) :
- (a) minor district greening and street beautification works;
  - (b) construction of signage, rain shelters, pavilions, arbours, benches, pedestrian covers, railings and fencing;
  - (c) general district improvement works such as construction/improvement of footpaths, van tracks, drainage system and stream courses; and
  - (d) Improvement works along walking trails