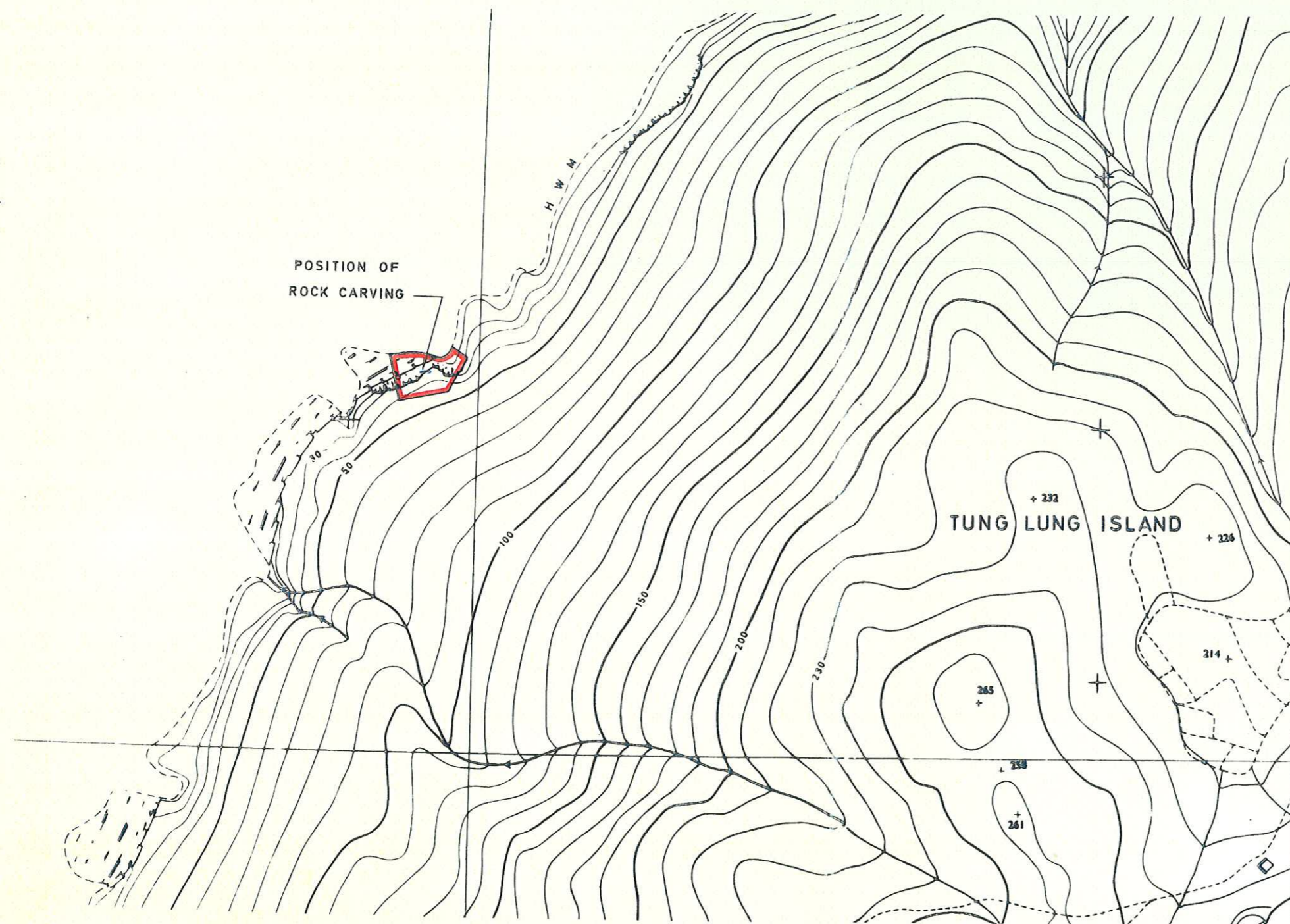
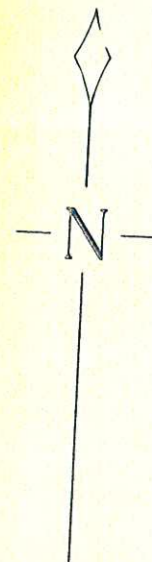
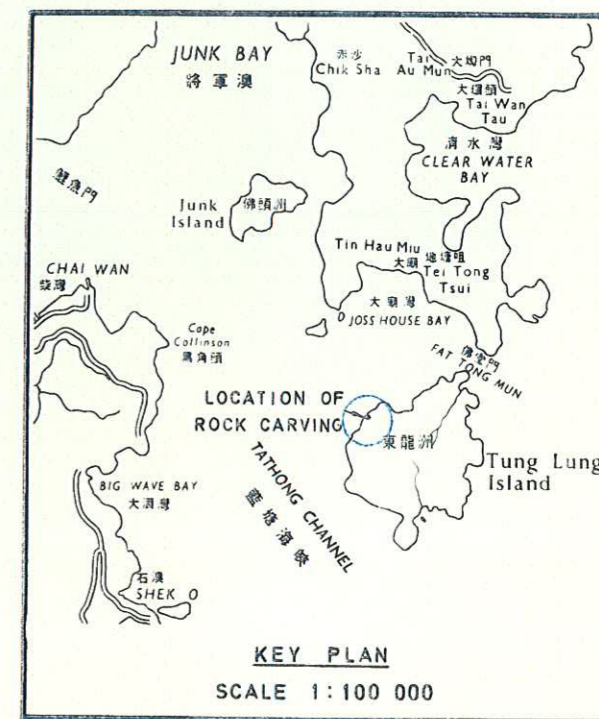


ANTIQUITIES & MONUMENTS ORDINANCE (CAP. 53)
PLAN OF ANCIENT ROCK CARVING AT TUNG LUNG ISLAND
DEPOSITED IN THE DISTRICT LAND OFFICE, SAI KUNG, UNDER SEC. 3 (4)

SERIAL No. NTM 2



(Heights in feet)
 SCALE 1:1200



EDGED RED AREA 160 m² (ABOUT)

Alan/outs
 SECRETARY FOR THE NEW TERRITORIES
 DATE 19/10/73