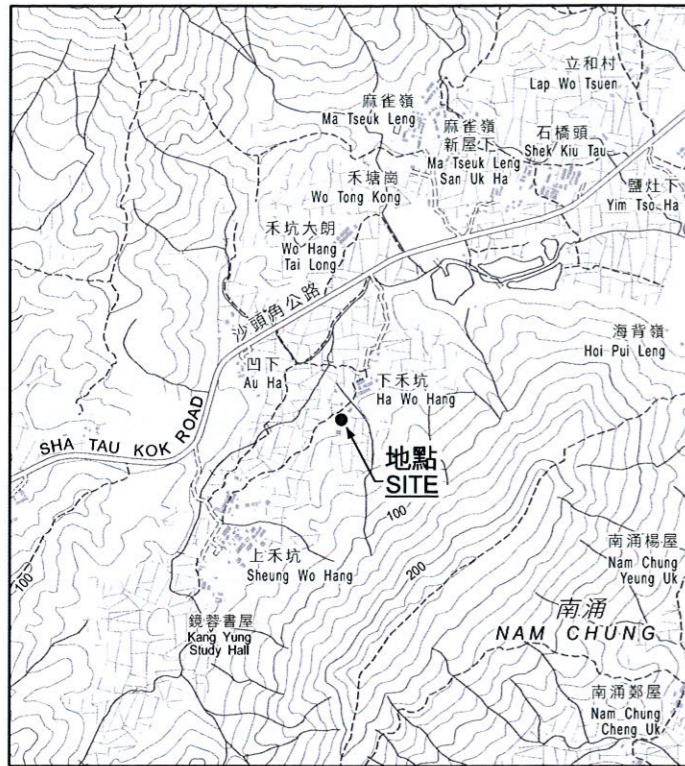
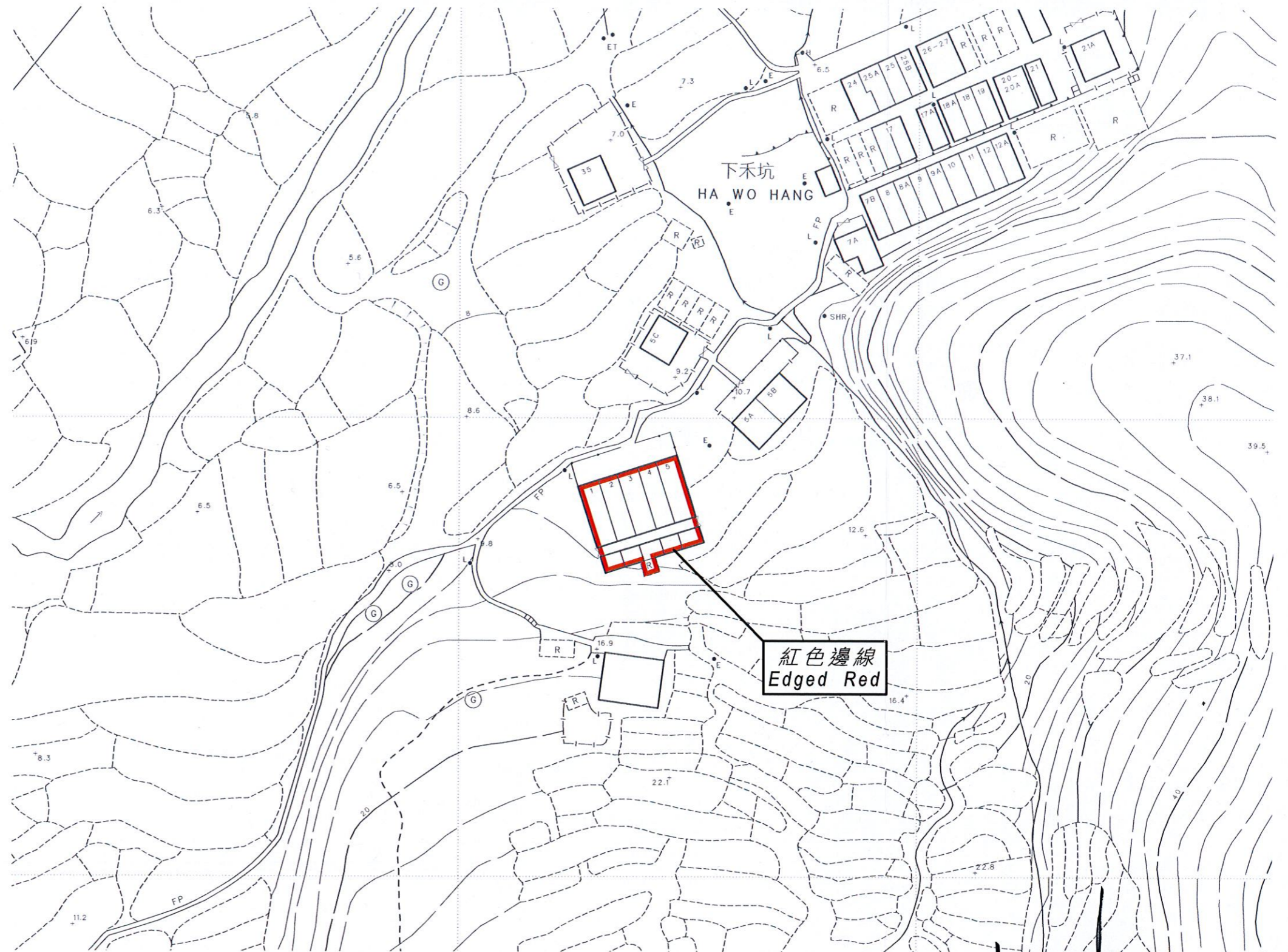


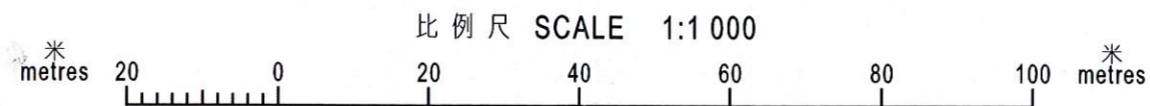
位置 LOCATION



比例 SCALE 1:20000



以紅色邊線標示的面積約為 459 平方米  
 EDGED RED AREA 459 SQUARE METRES (ABOUT)



比例尺 SCALE 1:1 000

(陳茂波 Paul M.P. Chan)  
 發展局局長 Secretary for Development  
 日期 Date 10 December 2013

只作識別用 FOR IDENTIFICATION PURPOSES ONLY

地政總署 北區測量處  
 District Survey Office, North  
 Lands Department

© 香港特別行政區政府 版權所有 Copyright reserved - Hong Kong SAR Government

古物及古蹟條例 (第 53 章)  
 根據第 3(4) 條存放於土地註冊處的新界沙頭角下禾坑 1 至 5 號發達堂圖則  
 ANTIQUITIES AND MONUMENTS ORDINANCE (CAP. 53)  
 PLAN OF FAT TAT TONG  
 AT 1-5 HA WO HANG, SHA TAU KOK, NEW TERRITORIES  
 DEPOSITED IN THE LAND REGISTRY UNDER SECTION 3(4)

檔案編號 File No. LD DSO/N 1/5/10  
 測量圖編號 Survey Sheet No. 3-NE-21B  
 發展藍圖編號 Layout Plan No. -----  
 參考圖編號 Reference Plan No. -----  
 圖則編號 PLAN No. DNM2872a