

窑具 的家庭

大家好！請讓我來介紹以下三位家庭成員：墊墩、匣鉢及火照。大家可到展櫃「窑具」查看我們的資料，把我們的名字填在空格內，並與用途配對起來。



窑具



()

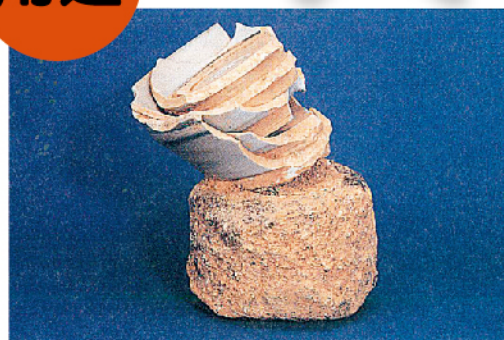


()



()

用途



用來疊起器坯的工具，這樣有助增加每次燒製器坯的數量。



用來觀測火候的工具；圓孔是方便窑工用長鈎把它們從窑室鈎出來。



把器坯放在這容器內燒製，可保護它們免受窑火煙灰破壞。

墊墩：用來疊起器坯的工具，這樣有助增加每次燒製器坯的數量。



火照：用來觀測火候的工具；圓孔是方便窑工用長鈎把它們從窑室鈎出來。



匣鉢：把器坯放在這容器內燒製，可保護它們免受窑火煙灰破壞。



窑具



古物古蹟辦事處
Antiquities and
Monuments Office

The Family of Firing Tools

Welcome! May I introduce my core family members to you? They are firing stand, sagger and fire tester. You can get to know more about us at showcase "Firing Tools". Please put down our names in the brackets and match them with our usage.



Firing Tool



()



()



()

Usage



An implement for stacking up the unfired biscuits so as to have more pieces in the kiln.



Used for measuring the level of heat in the kiln. Holes were made for potters to take them out with long hooks from the firing chamber.



A container for holding unfired biscuits to protect them from pollution of kiln debris during firing.

Sagger: A container for holding unfired biscuits to protect them from pollution of kiln debris during firing.
Fire tester: Used for measuring the level of heat in the kiln. Holes were made for potters to take them out with long hooks from the firing chamber.
Firing stand: An implement for stacking up the unfired biscuits so as to have more pieces in the kiln.

Answers



古物古蹟辦事處
Antiquities and
Monuments Office