

香港文物探知館  
「文物探索之旅」常設展覽  
「漢代」展區教育工作紙  
Education Worksheet for the  
“Han dynasty” Room of  
“Explore Our Heritage”  
Permanent Exhibition  
at the Hong Kong  
Heritage Discovery  
Centre



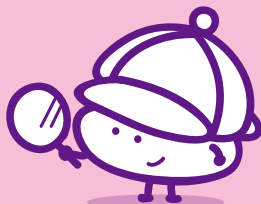
反斗神探破奇案  
DETECTIVE'S  
MISSION

「漢寶」之謎  
MYSTERY OF  
“HAN BOB”

探知館關門後，  
各項展品都在炫耀自己  
的厲害之處，只有「漢寶」  
不停在歎氣。

**館長**知道你  
屢破奇案，邀請你進行  
調查，為「**漢寶**」  
解決問題。

All the exhibits  
come to life and show  
off their strengths after  
the Centre is closed,  
but only "Han Bob"  
sighs in despair.



# 反斗神探破奇案 DETECTIVE'S MISSION

.....  
你的名字 Your Name

Our **curator**  
knows that you are  
good at solving cases,  
so you are now invited  
to carry out an  
investigation to help  
"Han Bob".

任務  
Mission

# 1 誰是漢寶?

## WHO IS HAN BOB?

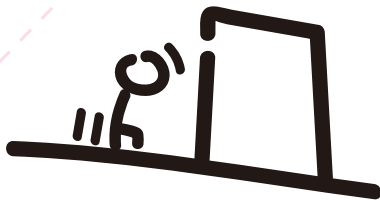
提示  
HINT

只有「漢寶」  
說的全是真話。  
Only "Han Bob" tells  
the truth.

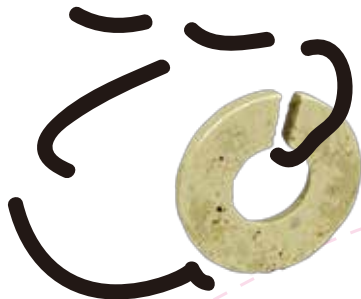
例子  
Sample

我居住在屯門掃  
管笏的一個墓葬裡。  
主人喜歡把我佩戴在  
鼻子上做裝飾。

I was living in a grave at So  
Kwun Wat, Tuen Mun.  
People used to put me on  
their noses as an  
accessory.



悄悄走進漢代展區，  
細心觀察和聆聽，找出誰是「漢寶」。  
"Shhhhh!" Creep into the "Han dynasty"  
Room. Let's observe and listen, then  
find out who "Han Bob" is.



玉玦  
Slotted jade ring

2



耳朵 Ears

答案 Answer .....

我是鐵製的，  
在馬灣東灣仔出土。  
人們可以用我來**追捕猛獸**。  
I was made of iron unearthed  
from Tung Wan Tsai on Ma Wan.  
People used me for  
**hunting animals.**

Answer: fishing  
答案：捕魚



青銅魚鉤  
Bronze fishing hook



「五銖」銅錢  
Wuzhu copper coin

我是**陶製**的五銖錢，  
在元朗米埔出土，自漢武帝  
時開始由中央統一發行。  
I am a **ceramic** Wuzhu coin  
excavated from Mai Po in Yuen Long.  
I was first issued by the central  
government under the reign  
of Emperor Wu of the  
Han dynasty.

Answer: copper  
答案：銅製

漢代(公元前  
206至公元220年)的先  
民在香港留下了不少  
遺跡，被考古學家發現。  
Our ancestors left behind  
many remains in Hong Kong  
during the Han dynasty  
(206 BC – AD 220). The  
remains have been found  
by archaeologists.

Answer: .....  
答案

青銅耳杯  
Bronze eared cup



我是在屯門掃管笏出土的青銅**盤**。銅是非常珍貴的材料，平民百姓可負擔不起。

I am a bronze **basin** found in So Kwun Wat, Tuen Mun. Bronze was a very expensive material which ordinary people found it unaffordable.

Answer : eared cup

答案：耳杯



答案 Answer .....



誰是「漢寶」？  
Who is "Han Bob"?

我是一塊在**元朗米埔**出土的編織品殘件；像我這類的有機物很難保存，所以我很珍貴。

I am a piece of textile fragment uncovered in **Mai Po, Yuen Long**. I am very precious because organic compounds like me are very difficult to be preserved."

Answer : So Kwun Wat, Tuen Mun

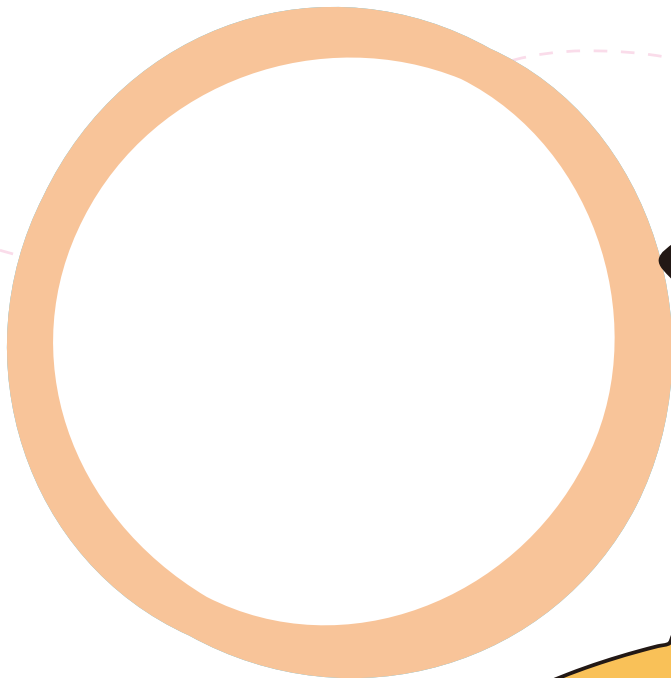
答案：屯門掃管笏



編織品殘件  
Textile fragment



答案 Answer .....



戳印紋硬陶罐

Hard pottery pot with stamped seal pattern



答案 Answer .....

我是戳印紋**軟**陶罐，  
可以用來貯存很多東西。我是在  
屯門掃管笏被發現的。

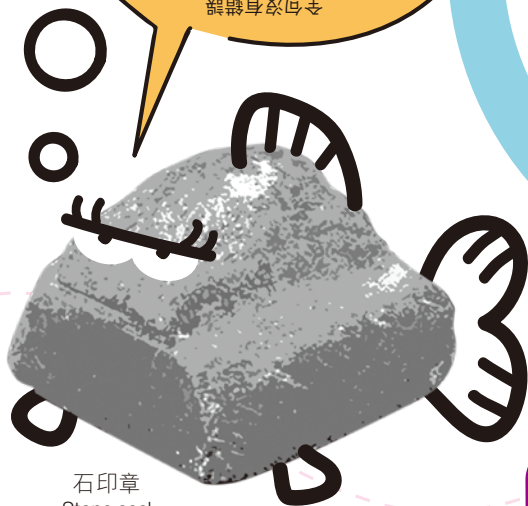
I am a **soft** pottery pot with  
stamped seal pattern for storage.  
I was found in So Kwun Wat,  
Tuen Mun.

Answer : hard

我是用石頭造的  
印章，在西貢灣西洲出土。  
我身上很乾淨，沒有刻字。

I am a stone seal excavated from  
Kau Sai Chau in Sai Kung. My  
body is clean and does not  
carry any words.

All correct  
全句沒有錯誤



石印章  
Stone seal



**答案**  
Answer

原來 \_\_\_\_\_ 就是「漢寶」!

Oh! "Han Bob" is \_\_\_\_\_ !

答案：石印章  
Answer : Stone seal

答案 Answer .....



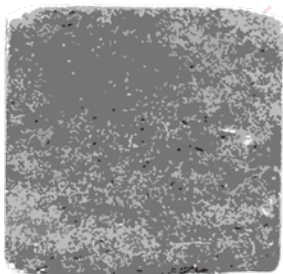
Q

任務  
Mission

2

# 漢寶的煩惱!

## THE WORRY OF HAN BOB



西貢潯西洲出土石印印面  
Surface of a stone seal unearthed from  
Kau Sai Chau in Sai Kung

漢寶常常被其他展品同伴嘲笑，說他不完美，所以他常常悶悶不樂。廣州南越王墓葬曾出土一枚印章，是漢代初期南越國國王使用的。漢寶常常拿自己和他比較。

Han Bob is often teased by other exhibits because of his flaw. He is unhappy. A seal was unearthed from the tomb of the Nanyue King in Guangzhou. It was used by the Nanyue King in the early Han dynasty.

Han Bob always compares himself to this seal.

到底漢寶身上缺少了什麼呢?  
What is actually missing from  
Han Bob's body?



廣州南越王墓葬出土印章印面  
Surface of a seal unearthed from the tomb of  
Nanyue King in Guangzhou

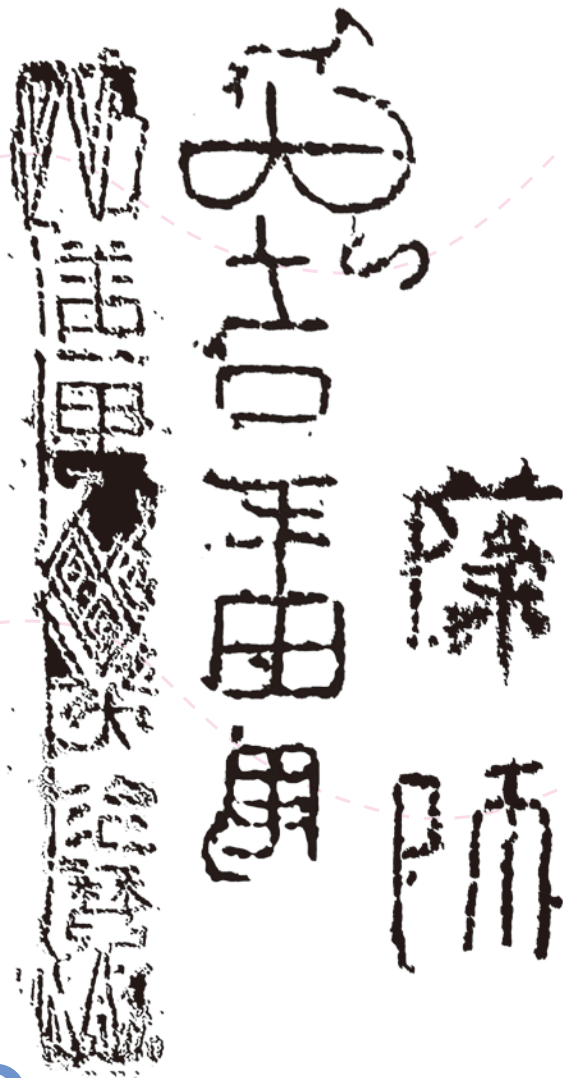
答案  
Answer

漢寶身上缺少了\_\_\_\_\_。

We cannot find any \_\_\_\_\_  
on the body of Han Bob.

Answer : 文字  
答案 : 文字

7



原來，印章上的文字往往交代了  
主人的姓名或官職。同伴見漢寶乾乾淨淨，  
都嘲笑他。漢寶一直想擁有屬於自己的記號。

但是，漢代的文字是怎樣的呢？

Words carved on seals often tell us the name  
or title of the seal owner. Seeing the plain body of  
Han Bob, his friends always tease him. Han Bob  
wants to have a unique symbol on his body.

However, how does writing in the  
Han dynasty look like?

抬頭看看「漢代」  
展區牆壁的四周，你看到  
一些特別的符號嗎？

Look around the walls  
of the "Han dynasty"  
Room. Can you see any  
special coding?



# 任務 Mission ③ 漢字解碼

## DECODING THE HAN CODES

漢寶說：「這些文字都是在深水埗李鄭屋漢墓的磚頭上發現的，和我們現在的文字有點不同，是漢代的隸書。」

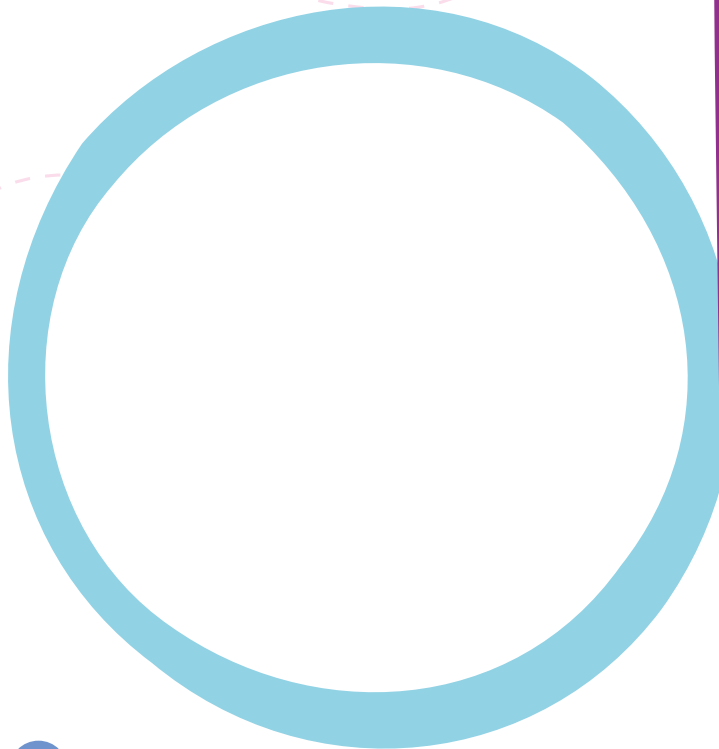
“They are Chinese characters written in *lishu*, which were inscribed on the bricks of the Lei Cheng Uk Han Tomb in Sham Shui Po.

These characters are different from the present Chinese writing.”

你可以沿著右面的字帖，

寫出這些文字嗎？

Can you trace the line  
and copy the ancient  
Chinese writing?



大

(大)

吉

(吉)

番

(番)

禺

(禺)

祝願番禺好運

Blessing to Panyu County

1955年，在興建深水埗李鄭屋邨時，發現了一座結構完整的磚室墓葬，出土器物58件。根據墓內出土器物及磚上文字去研究，墓葬時代應屬東漢（公元25至220年）。李鄭屋漢墓於1988年被列為法定古蹟。

An ancient brick tomb was discovered in 1955 during the construction work of the Lei Cheng Uk Estate in Sham Shui Po. A total of 58 objects were found inside the tomb. Evidence such as the forms of burial objects and the Chinese characters on the bricks suggests that the Lei Cheng Uk Han Tomb was built during the Eastern Han dynasty ( AD 25 – 220 ). It was declared a monument in 1988.



墓磚上「番禺」二字，證明香港地區在東漢時屬於番禺縣的範圍。  
The inscriptions “Panyu” (番禺) are found on the tomb bricks. It proves that Hong Kong was included in Panyu County in the Eastern Han dynasty.



祝願番禺平安

Peace to Panyu County

番

(番)

禺

(禺)

大

(大)

治

(治)

曆

(曆)

姓薛的造磚者

“Master Xue” surname of a brick maker

陳

(薛)

師

(師)

任務  
Mission

4

# 漢寶的記號!

## HAN BOB'S UNIQUE SYMBOL

如果漢寶能擁有自己的記號，  
他便會高興起來。你能為他設計一個獨特的記號嗎？

Han Bob will be happy with his own symbol on his body.  
Can you design a unique symbol for him?

漢寶有了這個獨特  
的記號後，探知館內再  
也沒有傳出歎息聲了。

館長很高興你  
破案立功。

Han Bob finally got  
his unique symbol.  
From now on, no more  
sighs are heard in the  
Centre. Our curator  
appreciates your efforts  
in resolving this case.  
Well done!





九龍尖沙咀海防道九龍公園香港文物探知館  
Hong Kong Heritage Discovery Centre, Kowloon Park, Haiphong Road, Tsim Sha Tsui, Kowloon

☎ 2208 4488 🖨 2377 9792 🌐 <https://www.amo.gov.hk>



古物古蹟辦事處  
Antiquities and  
Monuments Office