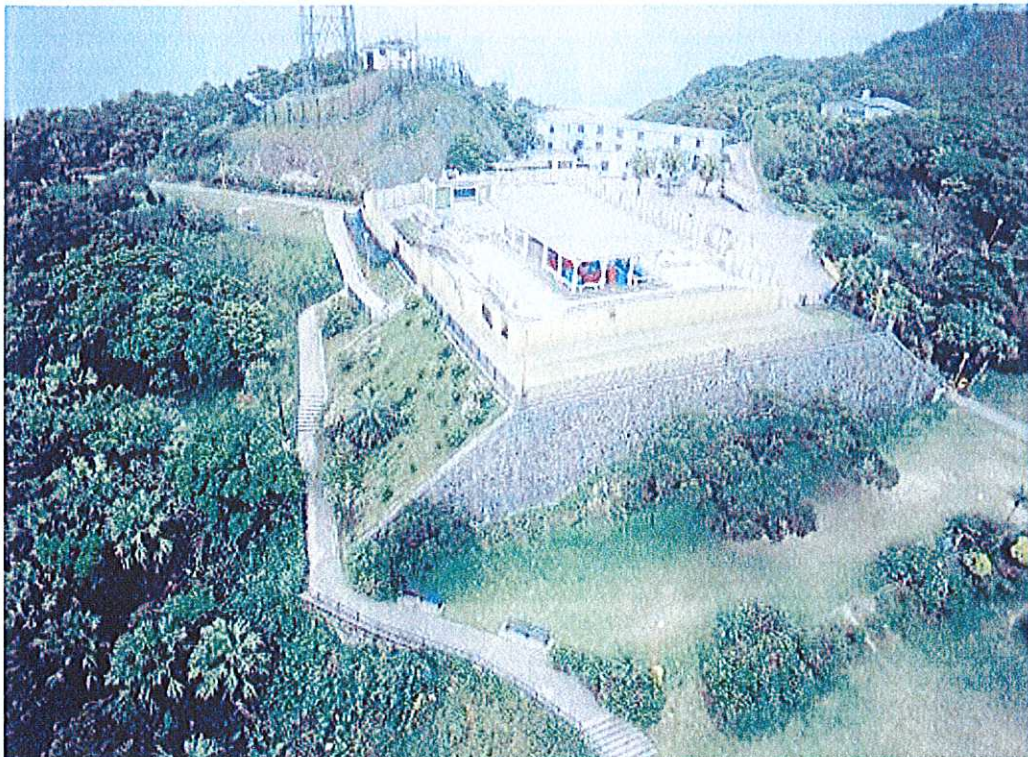


附錄 C
Annex C

圖版 1-2	山頂別墅遺址
Plate 1-2	Site of Mountain Lodge
圖版 3-5	石牆基的外部
Plate 3-5	Exterior of stone wall foundation
圖版 6	考古調查前的探坑
Plate 6	Trial pits before archaeological investigation
圖版 7	探坑 T2
Plate 7	Trial Pit T2
圖版 8	探坑 T3
Plate 8	Trial Pit T3
圖版 9	探坑 T4
Plate 9	Trial Pit T4
圖版 10-12	發掘後的入口
Plate 10-12	Main Entrance after the excavation
圖版 13	門廊的地磚
Plate 13	Floor tiles of the porch
圖版 14	探溝 T5
Plate 14	Test Trench T5
圖版 15	探溝 T7
Plate 15	Test Trench T7
圖版 16	探溝 T8
Plate 16	Test Trench T8
圖版 17	探溝 T9
Plate 17	Test Trench T9
圖版 18	石階(細部)
Plate 18	Details of stone steps
圖版 19	舊工人宿舍的範圍及探溝 TA
Plate 19	Area of servant quarters and Test Trench TA
圖版 20	探溝 TB 及 TC
Plate 20	Test Trench TB and TC



山頂別墅遺址 (西向東)
Site of the Mountain Lodge (West to East)



山頂別墅遺址的護坡牆及舊石階 (東南向西北)
Site of the Mountain Lodge, retaining wall and old stone steps (Southeast to northwest)



山頂別墅遺址及建築署山頂地盤辦公室 (西北向東南)
Site of the Mountain Lodge and the Architectural Services Department site office
(Northwest to Southeast)



山頂別墅遺址與舊石階 (南向北)
Site of the Mountain Lodge and old stone steps (South to North)



1.



2.



3.



4.



5.

1. 南面入口的石獅
Rock lion at Southern
entrance

2. 南面的石牆基
Southern stone wall
foundation

3. 密封的通風位
Sealed vent

4. 經清理後的通風位
Vent after clearance

5. 通風位內部
Interior of vent



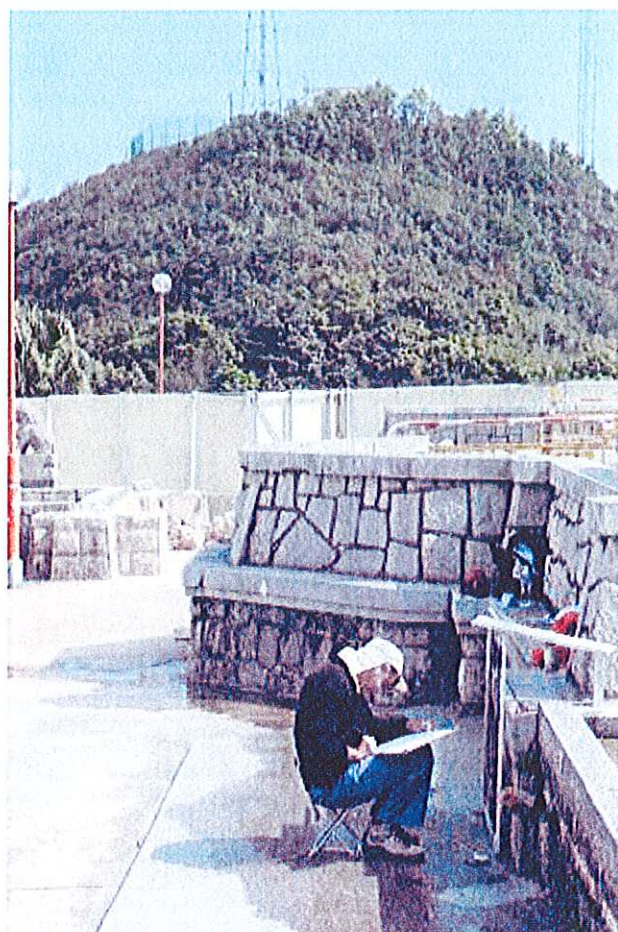
1.



2.



3.



4.

1. 調查前的入口
Entrance before investigation (North to South)

2. 調查前的入口 (東向西)
Entrance before investigation (East to West)

3. 角樓的石牆基
Stone wall foundation of corner tower (East to West)

4. 石牆基的測繪
Measured drawing of stone wall foundation



1.



2.



3.



4.



5.

1. 涼亭
Pavilion

3-4. 遺址的西北部分
The Northwestern part of the site

2. 西側的石階
Stone steps in the west

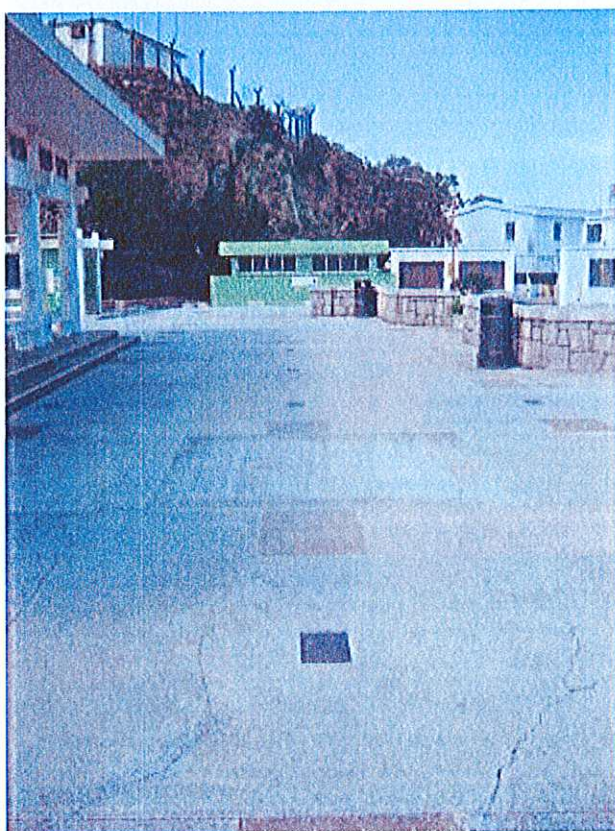
5. 修復人員清洗石柱礎上的油漆
Conservators are cleaning the paint on the column base



1.



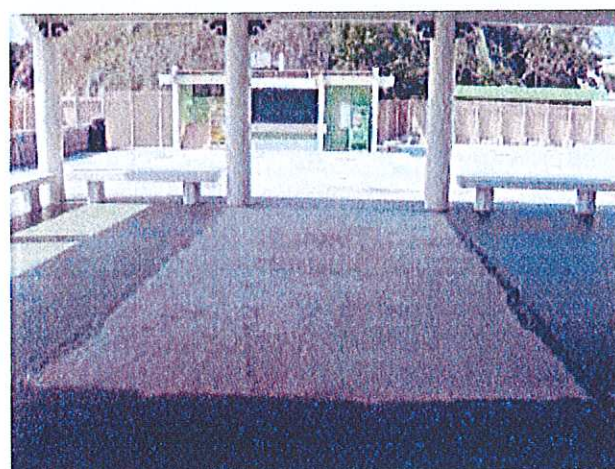
2.



3.



4.



5.

1. 建築署地盤調查收集的物料，現存於工地辦公室外
Remains collected by ASD ground investigation
currently stored at site office

2-5. 考古調查前的 1-4 號探坑
Trial Pit 1-4 before archaeological investigation



1.



2.



3.

1. 探坑 T2 南壁
South profile of Trial Pit 2

2. 探坑 T2 東壁
East profile of Trial Pit 2

3. 探坑 T2 北壁
North profile of Trial Pit 2



1.



2.



3.



4.



5.



6.

1. 探坑 T3 東壁
East profile of Trial Pit 3

2. 探坑 T3 內的遺跡
Features in the Trial Pit 3

3. 探坑 T4 清理前
Trial Pit 4 before clearance

4. 探坑 T4 南壁
South profile of Trial Pit 4

5. 探坑 T4 西壁
West profile of Trial Pit 4

6. 探坑 T4 北壁
North profile of Trial Pit 4



1.

1. 探坑 T4 東壁
East profile of Trial Pit 4



2.



3.

2-3. 探坑 T4 南壁內被封的通風位
Sealed vent situated at the south profile of Trial Pit 4



1.



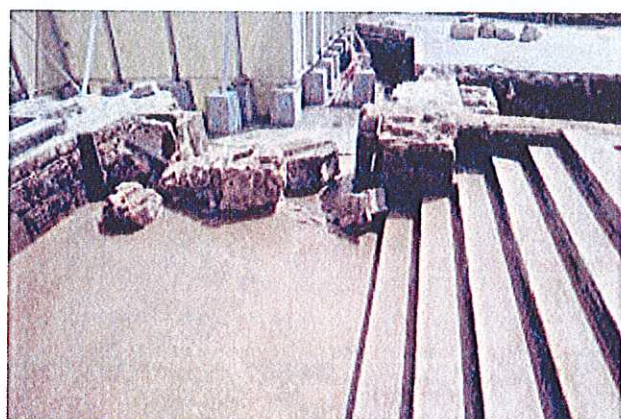
2.



3.



4.



5.



6.

1. 入口(西向東)
Main Entrance (West to East)

2. 入口 (北向南)
Main Entrance
(Southwest to Northeast)

3. 入口 (南向北)
Main Entrance (South to North)

4. 門廊及柱墩之間的石牆
Porch and stone wall
between column bases

5. 入口石階 (西向東)
The stone steps of the
Main Entrance (West to East)

6. 入口石階 (東向西)
The stone steps of the Main
Entrance
(East to West)



1.



2.



3.



4.

1. 入口北面的石牆
Stone wall foundation of the northern entrance

3. 門框痕跡入口 (西北角)
Trace of door frame (Northwest corner)

2. 入口外的鐵排水管 (西南角)
Iron drainage pipes on the Main Entrance
(Southwest corner)

4. 門框痕跡 (入口西南角)
Trace of door frame (Southwest corner of
Main Entrance)



1.



3.



4.



2.

1. 門框痕跡 (入口東北角)
Trace of door frame (Northeast corner of Main Entrance)

3. 入口位置發現的建築殘構件 (入口東南角)
Building remains discovered at Main Entrance (Southeast corner of Main Entrance)

2. 入口出土的建築殘件
Building remains collected from the Main Entrance

4. 清理門廊的地磚 (西向東)
Clearing floor tiles of the porch (West to East)

門廊的地磚
Floor tiles of the porch



1.



2.



3.



4.

1. 地磚的邊框與主題
Design of the border and field

3. 地磚的主題
Details of field design

2. 地磚 (西向東)
Floor tiles (From West to East)

4. 西南角的殘破部份
The broken part at the southwest corner



1.



2.



3.



4.



5.

1. 探溝 T5 北壁
North profile of Test
Trench 5

2. 探溝 T5 西壁
West profile of Test
Trench 5

3. 探溝 T5 遺蹟的頂部
Top view of the feature in
Test Trench 5

4. 探溝 T5 北壁
North profile of Test
Trench 5

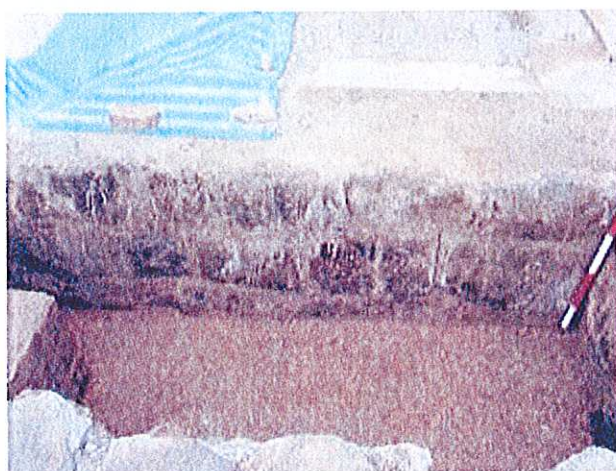
5. 探溝 T5 東壁
East profile of Test
Trench 5



1.



2.



3.



4.

1. 探溝 T7 北壁
North profile of Test Trench 7

2. 探溝 T7 南壁
South profile of Test Trench 7

3. 探溝 T7 東壁
East profile of Test Trench 7.

4. 探溝 T7 西壁
West profile of Test Trench 7



1.



2.



3.



4.

1. 探溝 T8 東壁
East profile of Test Trench 8

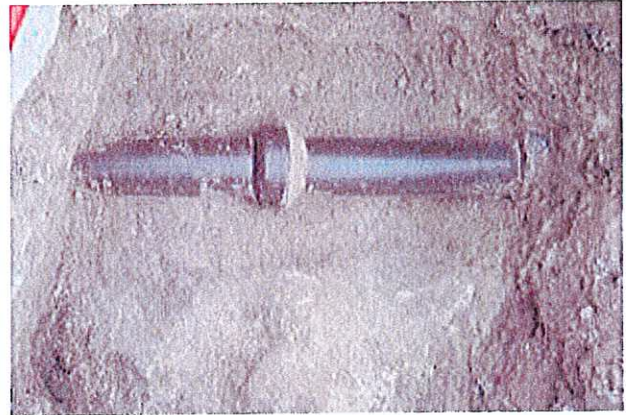
2. 探溝 T8 西壁
West profile of Test Trench 8

3. 探溝 T8 南壁
South profile of Test Trench 8

4. 探溝 T8 北壁
North profile of Test Trench 8



1.



2.



3.



4.

1. 探溝 T9 (西北向東南)
Test Trench 9 (Northwest to Southeast)

3. 探溝 T9 內的雨水渠及水管 (東向西)
Rainwater drain and ceramic pipe in Test
Trench 9
(East to West)

2. 探溝 T9 的釉陶水管 (南向北)
A ceramic pipe of Test Trench 9
(South to North)

4. 探溝 T9 的石牆基 (西向東)
Stone wall foundation in Test Trench 9 (West to
East)



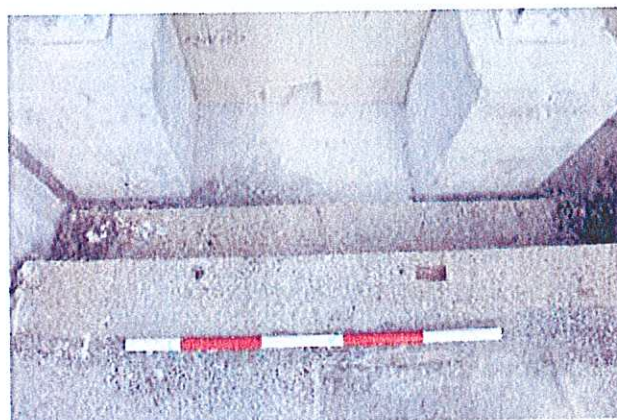
1.



2.



3.



4.

1. 近小食亭石階上的孔(西向東)
Holes on stone steps near kiosk (West to East)

2. 近遺址西北角石階上的孔(北向南)
Holes on stone steps near northwest corner
of Mountain Lodge (North to South)

3. 近小食亭石階上的孔(北向南)
Holes on stone steps near kiosk (North to
South)

4. 近遺址西北角石階上的孔(東向西)
Holes on stone steps near northwest corner
of Mountain Lodge (East to West)



1.



2.



3.



4.

1. 發掘前的舊工人宿舍
Area of former servant quarters before excavation

2. 舊工人宿舍內的鐵欄桿
Iron balustrade at the edge of servant quarters

3. 探溝 TA 內的遺跡 (南向北)
Features unearthed in Test Trench A (South to North)

4. 探溝 TA 內的遺跡 (東向西)
Features unearthed in Test Trench A (East to West)



1.



2.



3.



4.

1. 探溝 TB 內的遺跡 (東向西)

Features unearthed in Test Trench B (East to West)

2. 探溝 TC 內的遺跡 (南向北)

Features unearthed in Test Trench C (South to North)

3. 探溝 TC 內的遺跡 (北向南)

Features unearthed in Test Trench C (North to South)

4. 探溝 TC 內的遺跡 (東向西)

Features unearthed in Test Trench C (East to West)