

**Brief on the Cultural Remains of Song-Yuan Period Unearthed by
Archaeological Work at Sacred Hill (North) Study Area for
Shatin to Central Link – Tai Wai to Hung Hom Section
(SCL(TAW-HUH))**

BACKGROUND

The Shatin to Central Link rail project, initiated by the MTR Corporation Limited (MTRCL), is a designated project under the Environmental Impact Assessment Ordinance (EIAO) (Cap. 499). An archaeological survey-cum-excavation is being conducted at the Sacred Hill (North) Study Area prior to the commencement of construction works as recommended by the approved EIA Report (Figure 1).

2. Dr Liu Wensuo, the archaeologist engaged by the consultant of MTRCL to carry out the survey-cum-excavation, submitted a licence application to the Antiquities and Monuments Office (AMO) in September 2012 and was granted a licence for the archaeological field project by the Antiquities Authority after assessment by the AMO and with the support of the Antiquities Advisory Board (AAB).

3. Two briefs on the findings of the archaeological work, including granite structures of early 20th century and the cultural remains of Song-Yuan period were circulated to AAB members for information on 11 December 2012 and 27 March 2013.

**FURTHER DISCOVERIES OF CULTURAL REMAINS OF
SONG-YUAN PERIOD**

4. Recently, the archaeologist informed AMO that more burials dated to Song-Yuan period were identified in the remaining excavation area during the Stage III survey-cum-excavation (Figure 2). Burial goods including iron nails, ceramic shards (Photo 1), completed items like pottery vessels and celadon bowl (Photo 2), etc. were found. Besides, another remnant of a collapsed building of Song-Yuan period was discovered in the close vicinity of some burials. The excavation of these cultural remains is still in progress, and their heritage significance will be further assessed.

5. Other discovered archaeological features of Song-Yuan Period include wooden piles, remains associated with lime production such as remains of lime kiln, fire bars and coral (Photo 3). The details of these features are being studied.

6. The survey-cum-excavation is still going on and expected to be completed in late 2013. Construction works will start after the completion of the archaeological work. AMO will continue to closely monitor the archaeological work and report to the AAB if and when necessary.

REPORTED DISCOVERIES OF SONG DYNASTY COINS OUTSIDE LICENSED EXCAVATION AREA

7. On 6 September 2013, MTRCL reported to AMO that two coins were found in the MTRCL construction site during bore piling works. The construction site is situated near the current licensed survey-cum-excavation area in Sacred Hill (North). A site inspection by AMO was conducted on the same day to examine the finds as well as the location where the coins were discovered. The two coins could be dated to Northern Song dynasty (Photo 4). Both were collected by AMO for further handling.

8. On 10 September 2013, AMO received another report from MTRCL on further discovery of coins. 553 coins were discovered from another location of the same bore piling works site (Photo 5). Locations of the two discoveries are shown in Figure 3. On the same day, AMO arranged a joint site inspection with representatives from MTRCL. It was preliminarily assessed that the majority of the coins were from the Northern Song dynasty. Others include coins of Tang dynasty and Southern Song dynasty. All the coins were collected by AMO and deposited to Archaeological Repository for further study.

9. Given a large quantity of coins were found at the construction site, a meeting with MTRCL was held on 16 September 2013 to discuss the follow up actions. Excavation of inspection trenches was agreed to assess the archaeological potential. Further mitigation measures would then be formulated on the basis of the inspection result.

10. A subsequent on-site meeting was held with MTRCL on 18 September 2013. Despite the technical limitation due to the on-going piling works, two 5m

long X 1m wide inspection trenches were demarcated and mutually agreed by AMO and MTRCL for further assessing the archaeological potential. Figure 4 indicates the locations of the two proposed trenches.

11. MTRCL will arrange archaeologist to monitor the progress of the trench works and AMO will carry out necessary inspections. If there is any archaeological potential identified, suitable mitigation measures will be worked out with MTRCL and their consultant. AMO will closely monitor the trench works and report to the AAB of the result if and when necessary.

Antiquities and Monuments Office

September 2013

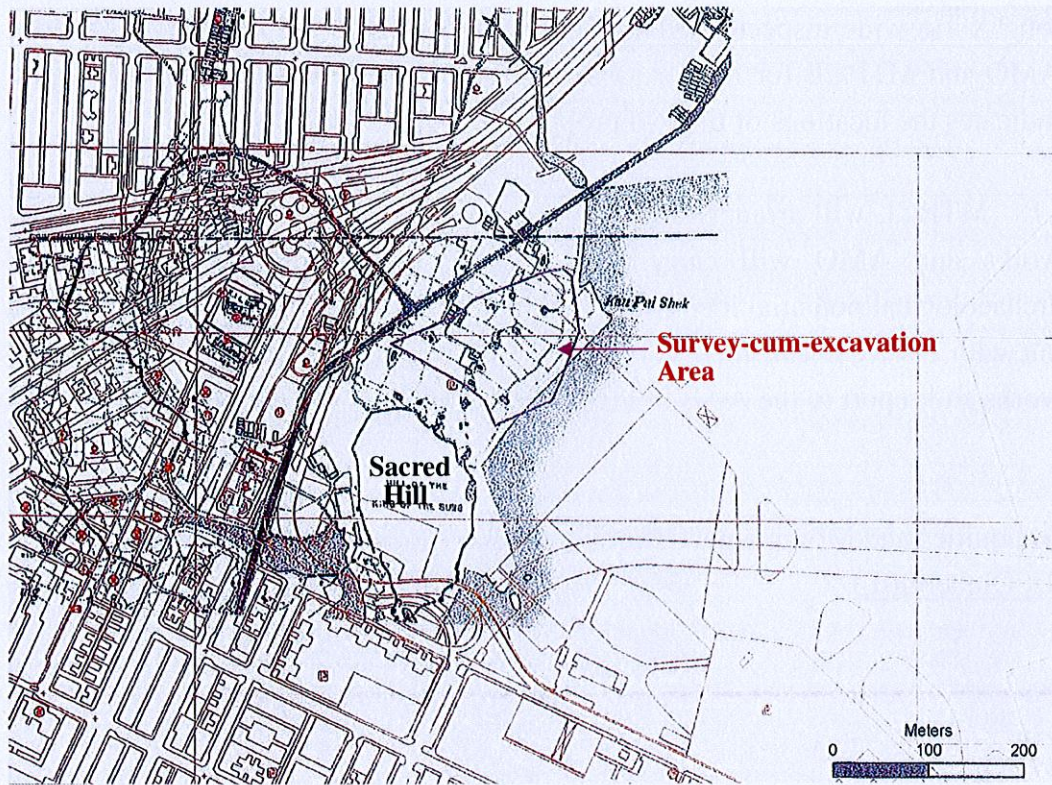


Figure 1: An archaeological survey-cum-excavation is being conducted at the Sacred Hill (North) Study Area as delineated in red.

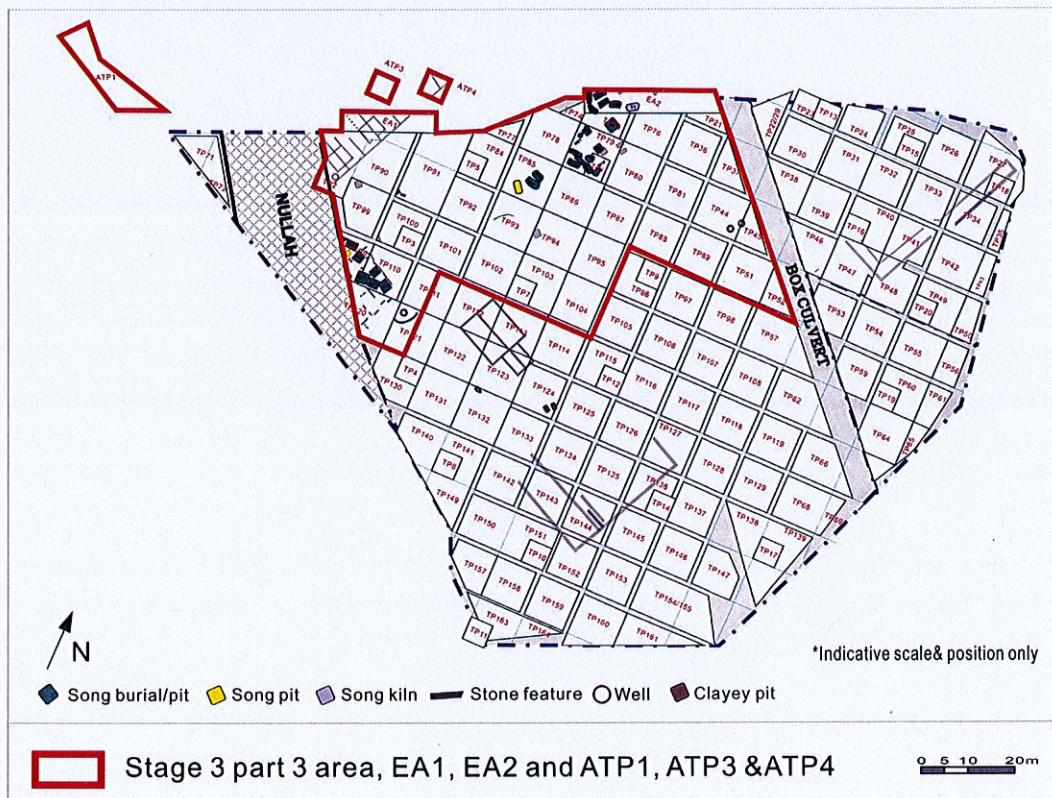


Figure 2: Area of Stage III survey-cum-excavation.



Photo 1: Ceramic shards found in a burial.



Photo 2: A complete celadon bowl from a burial.



Photo 3: A piece of charcoal unearthed.



Photo 4: The two coins discovered that could be dated to Northern Song dynasty. (Left: 皇宋通寶 and Right: 熙寧元寶)



Photo 5: Over 500 Song dynasty coins were discovered.

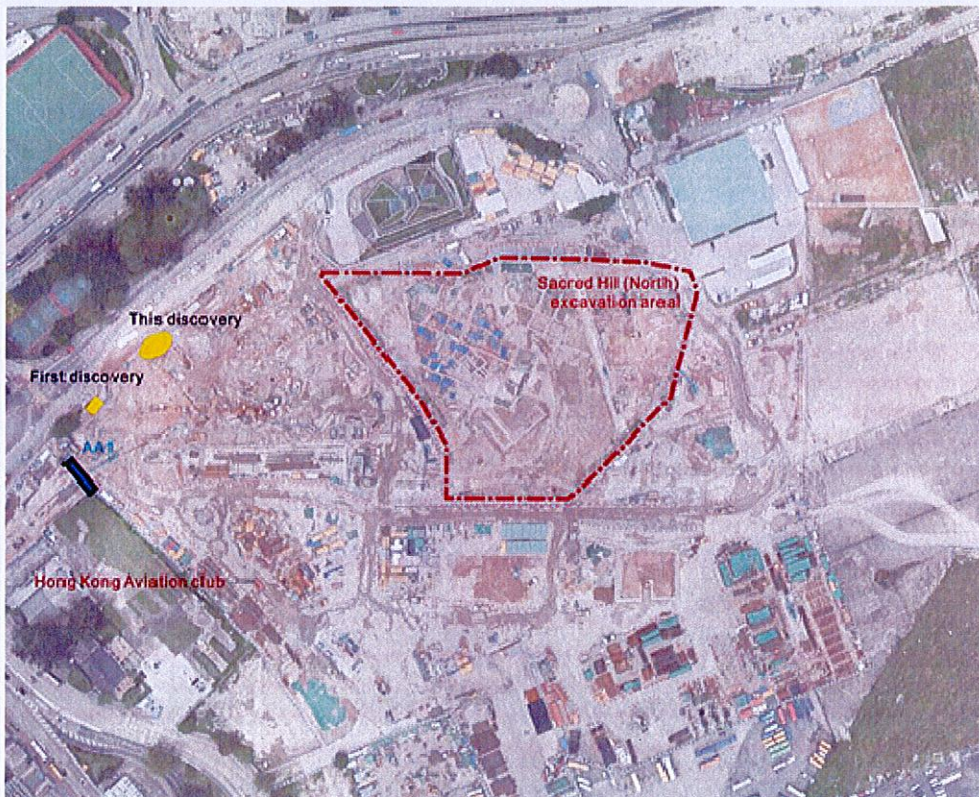


Figure 3: Locations of the two discoveries (shaded in yellow colour).

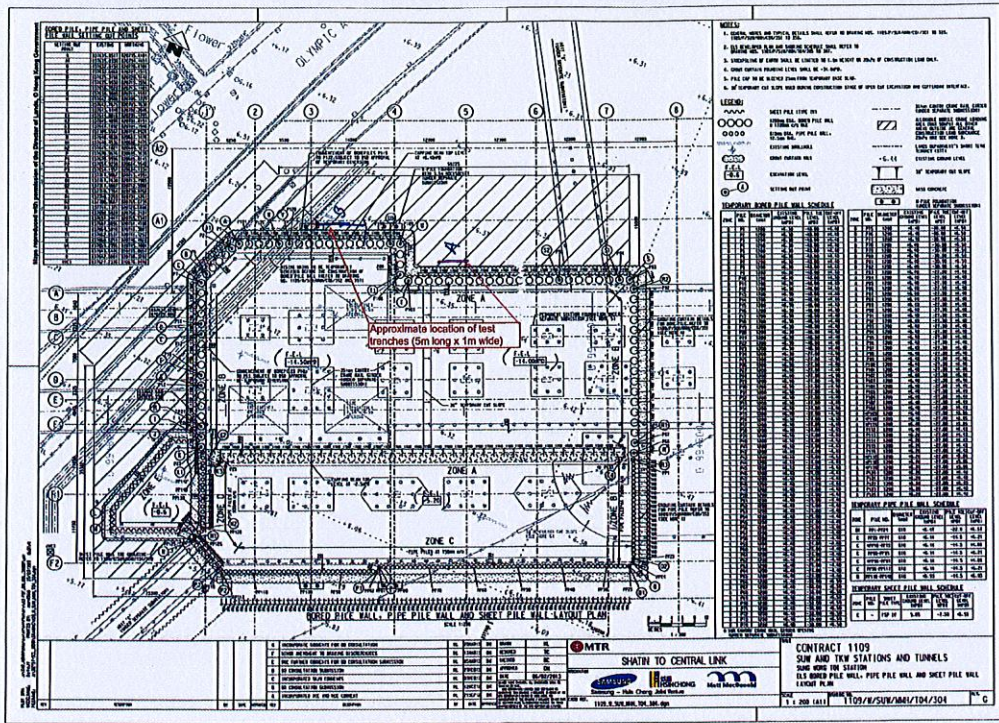


Figure 4: Locations of the two proposed trenches.