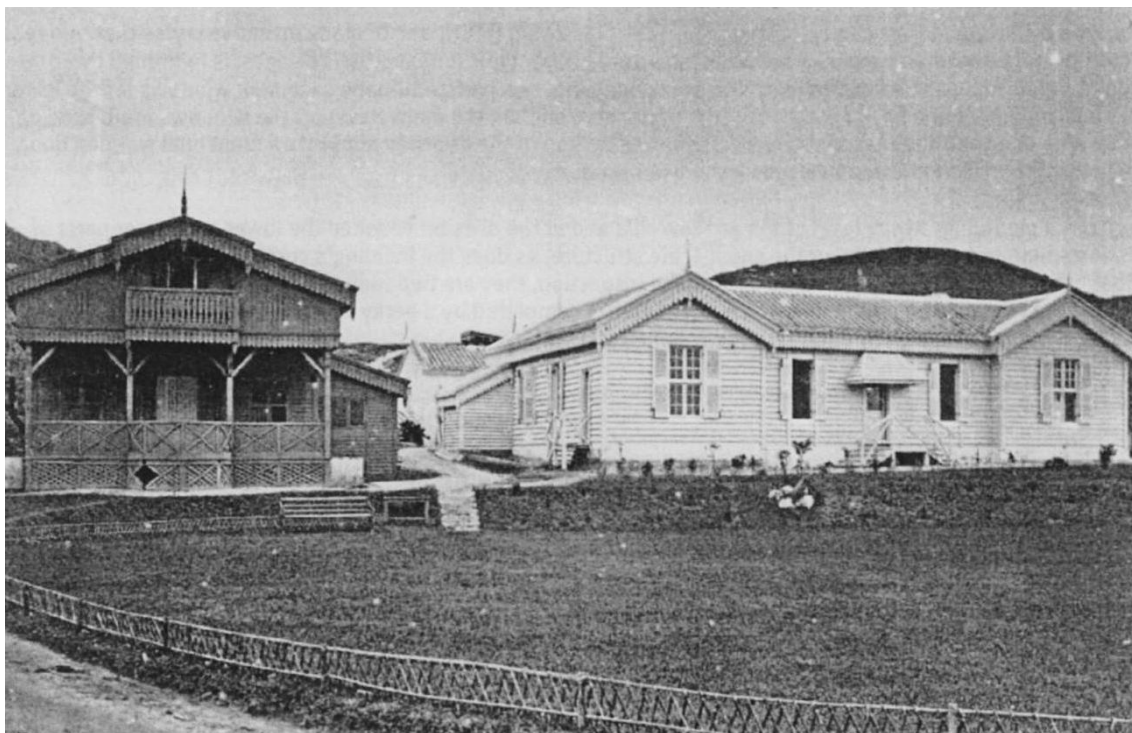


(照片目錄及出處 Content and References of photographs)

1. 1872 年的第一所山頂別墅
First Mountain Lodge in 1892
(Courtesy of Hong Kong Public Records Service)
2. 1874 年的前總督山頂別墅
Former Mountain Lodge in 1874
(Courtesy of Hong Kong Museum of History Ref.: P1964.0266 1874)
3. 1903 年的前總督山頂別墅，右邊為工人宿舍
Former Mountain Lodge in 1903, servant quarters on the right
(Courtesy of Hong Kong Museum of History Ref.: P1987.0452)
4. ~~前~~前總督山頂別墅(北向南)
Former Mountain Lodge (N-S)
(Courtesy of Hong Kong Museum of History Ref.: P2006.0798)
5. 1913 年從守衛室附近遠眺山頂別墅
Viewing Former Mountain Lodge from the Gate Lodge 1913
(Courtesy of Hong Kong Museum of History Ref.: P2006.0796)
6. 以前總督山頂別墅為題材的彩色明信片
Former Mountain Lodge in a colour postcard
(Courtesy of Hong Kong Museum of History Ref.: PC1989.0314 1910)
7. ~~前~~前總督山頂別墅(東向西)
Former Mountain Lodge (E to W)
(Courtesy of Hong Kong Museum of History Ref.: P1987.0452)
8. 1900 年重陽期間，以轎子登山的人士，中間為守衛室
Chung Yeung Festival in 1900, people travelled to the Peak by sedan chair
(Courtesy of Hong Kong Museum of History Ref.: P1964.0410)
9. ~~前~~前總督山頂別墅(南向北)
Former Mountain Lodge (S to N)
(Courtesy of Hong Kong Museum of History Ref.: P2006.0797)
10. 於前總督山頂別墅的谷地茶叙，攝於 1915 年 10 月 5 日
Tea party in the valley at Former Mountain Lodge, 5 October 1915
(Courtesy of Hong Kong Public Records Service Ref.: PH002807)
11. ~~前~~前總督山頂別墅內的聖誕樹，攝於 1915 年 12 月
Christmas Tree at Former Mountain Lodge, December 1915
(Courtesy of Hong Kong Public Records Service Ref.: PH002838)

12. 為史樂郡皇第 4 旅步兵團而設茶會，攝於前總督山頂別墅 1916 年 10 月 3 日
Tea party for the 4th King's Shropshire Light Infantry at Former Mountain Lodge, 3 October 1916
(Courtesy of Hong Kong Public Records Service Ref.: PH002883)
13. 梅合理爵士與家人於前總督山頂別墅吃早餐，攝於 1917 年 1 月 3 日
May Family at breakfast at Former Mountain Lodge, 3 January 1917
(Courtesy of Hong Kong Public Records Service Ref.: PH002970)
14. 1916 年副官 F.J.Kinchin Smith 中尉於前總督山頂別墅的迴廊
Lieutenant F.J. Kinchin Smith Aide De Camp, on the verandah of Former Mountain Lodge, 1916
(Courtesy of Hong Kong Public Records Service Ref.: PH002969)
15. 梅合理夫人於前總督山頂別墅的迴廊，攝於 1915 年 9 月
Lady May on the Verandah of Former Mountain Lodge, September 1915
(Courtesy of Hong Kong Public Records Service Ref.: PH002804)
16. 梅合理夫人及女兒 Dione May 於前總督山頂別墅的客廳，攝於 1916 年
Dione May and Lady May in the drawing room at Former Mountain Lodge, 1916
(Courtesy of Hong Kong Public Records Service Ref.: PH002968)
17. 梅合理爵士的女兒於前總督山頂別墅的客廳，攝於 1915 年
May Sisters (Sir Henry May's daughters) in the drawing room of Former Mountain Lodge, 1915
(Courtesy of Hong Kong Public Records Service Ref.: PH002768)
18. 梅合理爵士的女兒及名為 Sui-e 的小孩，於前總督山頂別墅的階梯前，攝於 1915 年
May Sisters (Sir Henry May's Daughters) and Sui-e on the terrace of Former Mountain Lodge, 1915
(Courtesy of Hong Kong Public Records Service Ref.: PH002805)
19. 梅合理夫人於前總督山頂別墅的階梯前，攝於 1915 年 9 月
Lady May on the terrace of Former Mountain Lodge, September 1915
(Courtesy of Hong Kong Public Records Service Ref.: PH002803)
20. 梅合理爵士的女兒與 F.Kinchin Smith 及 Ponsonby Fane(港督的私人秘書)於山頂別墅，攝於 1915 年
May Sisters (Sir Henry May's Daughters) with Mr. F. Kinchin Smith and Mr. Ponsonby Fane (Private Secretary to the Governor) at Former Mountain Lodge, 1915
(Courtesy of Hong Kong Public Records Service Ref.: PH002837)
21. 梅合理夫人於前總督山頂別墅的花園內，攝於 1915 年 10 月
Lady May in the garden at Former Mountain Lodge, October 1915
(Courtesy of Hong Kong Public Records Service Ref.: PH002809)

22. 於前總督山頂別墅的網球活動，攝於 1919 年
Tennis at Former Mountain Lodge 1919
(Courtesy of Hong Kong Public Records Service Ref.: PH003004)
23. 由 Eyrie 的山頂住宅遠眺前總督山頂別墅，攝於 1915 年
Former Mountain Lodge viewed from the Eyrie, a private residence in the Peak, 1915
(Courtesy of Hong Kong Public Records Service Ref.:PH002766)



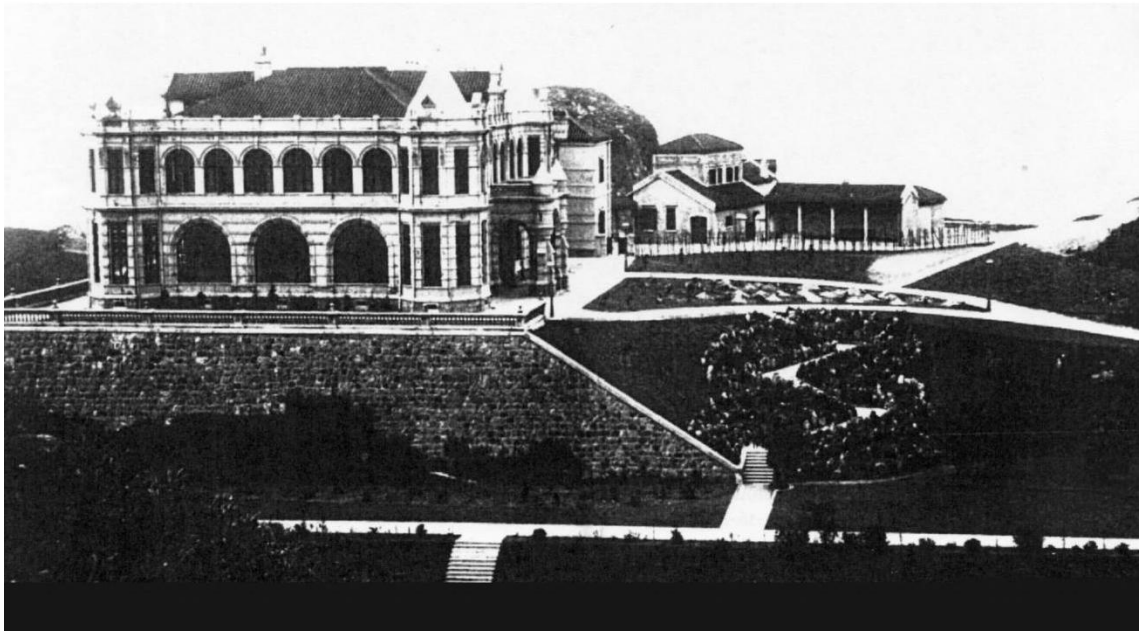
1.



2.

1. 1872 年的第一所山頂別墅
First Mountain Lodge in 1872

2. 1874 年的前總督山頂別墅
Former Mountain Lodge in 1874



3.



4.

3. 1903 年的前總督山頂別墅
Former Mountain Lodge in 1903

4. 前總督山頂別墅(北向南)
Former Mountain Lodge (N-S)



5.



6.



7.



8



9

| | | |
|--|--|---|
| <p>5. 1913 年從守衛室附近遠眺前總督山頂別墅 Viewing Former Mountain Lodge from the Gate Lodge 1913</p> | <p>6. 以前總督山頂別墅為題材的彩色明信片 Former Mountain Lodge in a colour postcard</p> | <p>7. 前總督山頂別墅(東向西) Former Mountain Lodge (E to W)</p> |
| <p>8. 1900 年重陽期間，以轎子登山的人士，中間為守衛室 Chung Yeung Festival in 1900, people travelled to the Peak by sedan chair, Gate Lodge can be seen in the middle</p> | <p>9. 前總督山頂別墅(南向北) Former Mountain Lodge (S to N)</p> | |



10.



11.



12.



13.

10. 於前總督山頂別墅的谷地茶叙，攝於 1915 年 10 月 5 日
Tea party in the valley at Former Mountain Lodge, 5 October 1915

12. 為史樂郡皇第 4 旅步兵團而設茶會，攝於前總督山頂別墅 1916 年 10 月 3 日
Tea party for the 4th King's Shropshire Light Infantry at Former Mountain Lodge, 3 October 1916

11. 前總督山頂別墅內的聖誕樹，攝於 1915 年 12 月
Christmas Tree at Former Mountain Lodge, December 1915

13. 梅合理爵士與家人於前總督山頂別墅吃早餐，攝於 1917 年 1 月 3 日
May Family at breakfast at Former Mountain Lodge, 3 January 1917



14.



15.



16.



17.

14. 1916 年副官 F.J.Kinchin Smith 中尉於前總督山頂別墅的迴廊
Lieutenant F.J. Kinchin Smith Aide De Camp,
on the verandah of Former Mountain Lodge,
1916

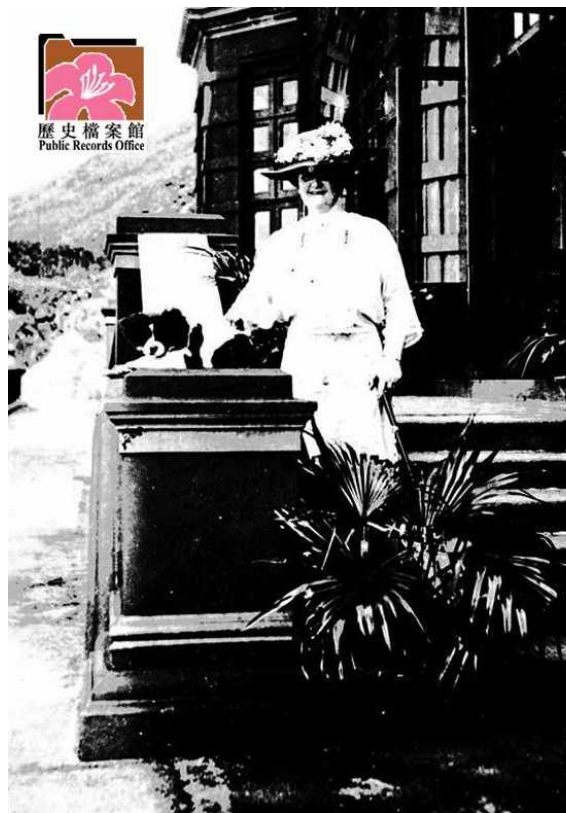
16. 梅含理夫人及女兒 Dione May 於前總督山頂別墅的客廳，攝於 1916 年
Dione May and Lady May in the drawing room
at Former Mountain Lodge, 1916

15. 梅含理夫人於前總督山頂別墅的迴廊，攝於 1915 年 9 月
Lady May on the verandah of Former Mountain
Lodge, September 1915

17. 梅含理爵士的女兒於前總督山頂別墅的客廳，攝於 1915 年
May Sisters (Sir Henry May's daughters) in the
drawing room of Former Mountain Lodge, 1915



18.



19.



20.



21.

18. 梅含理爵士的女兒及名為 Sui-e 的小孩，於前總督山頂別墅的階梯前，攝於 1915 年

May Sisters (Sir Henry May's Daughters) and Sui-e on the terrace of Former Mountain Lodge, 1915

20. 梅含理爵士的女兒與 F.Kinchin Smith 及 Ponsonby Fane(港督的私人秘書)於前總督山頂別墅，攝於 1915 年
May Sisters (Sir Henry May's Daughters) with Mr. F. Kinchin Smith and Mr. Ponsonby Fane (Private Secretary to the Governor) at Former Mountain Lodge, 1915

19. 梅含理夫人於前總督山頂別墅的階梯前，攝於 1915 年 9 月

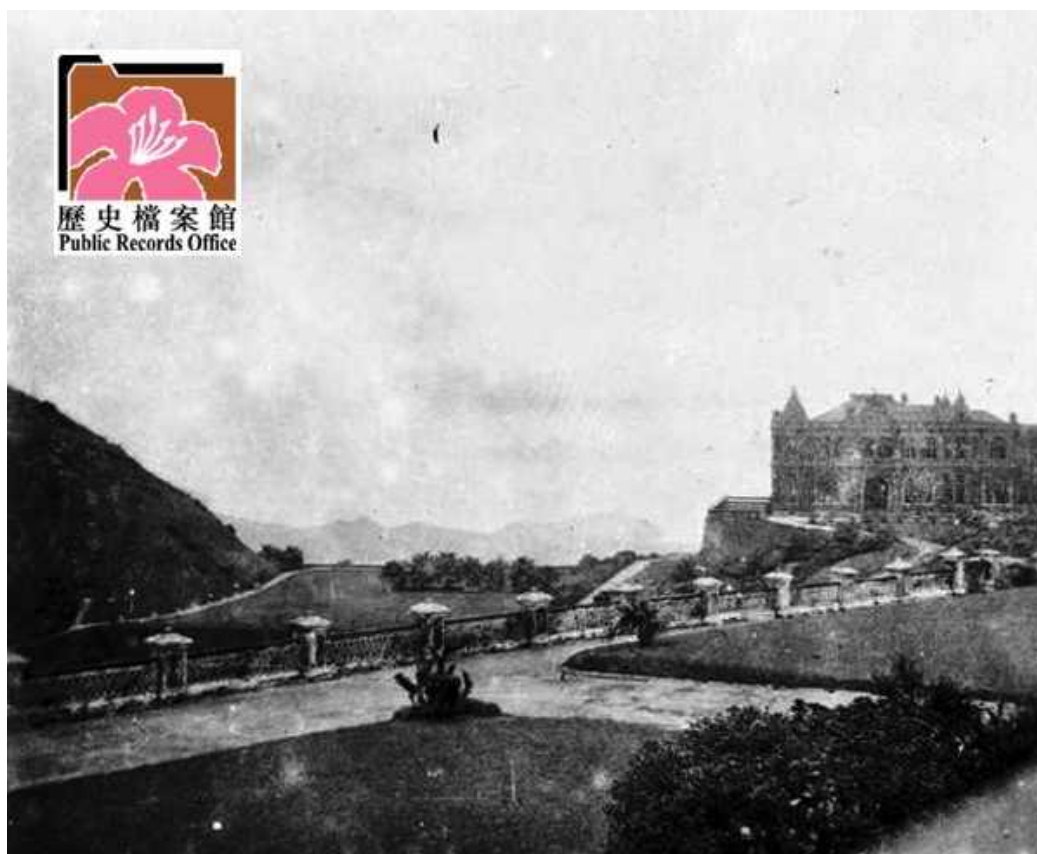
Lady May on the terrace of Former Mountain Lodge, September 1915

21. 梅含理夫人於前總督山頂別墅的花園內，攝於 1915 年 10 月

Lady May in the garden at Former Mountain Lodge, October 1915



22.



23.

22. 於前總督山頂別墅的網球活動，
攝於 1919 年
Tennis at Former Mountain Lodge 1919

23. 由 Eyrie 的山頂住宅遠眺前總督山頂別墅，攝於 1915 年
Former Mountain Lodge viewed from the Eyrie, a
private residence in the Peak, 1915