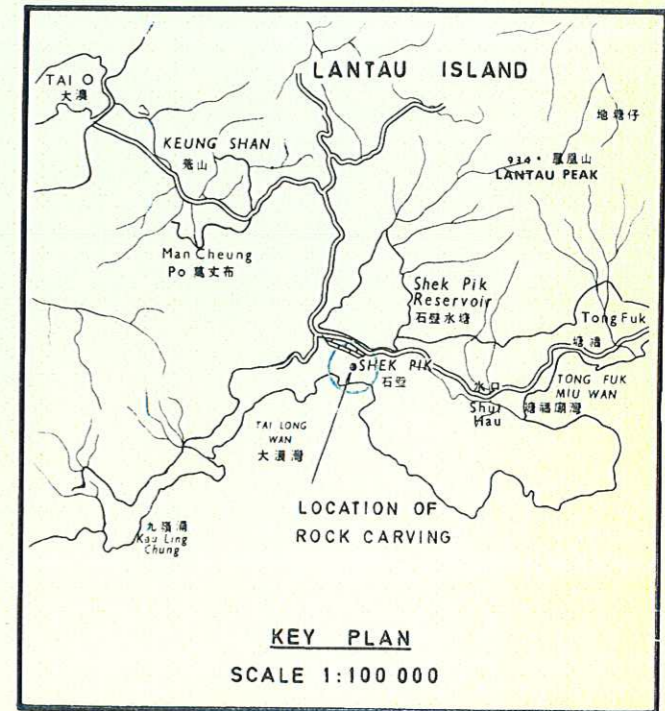
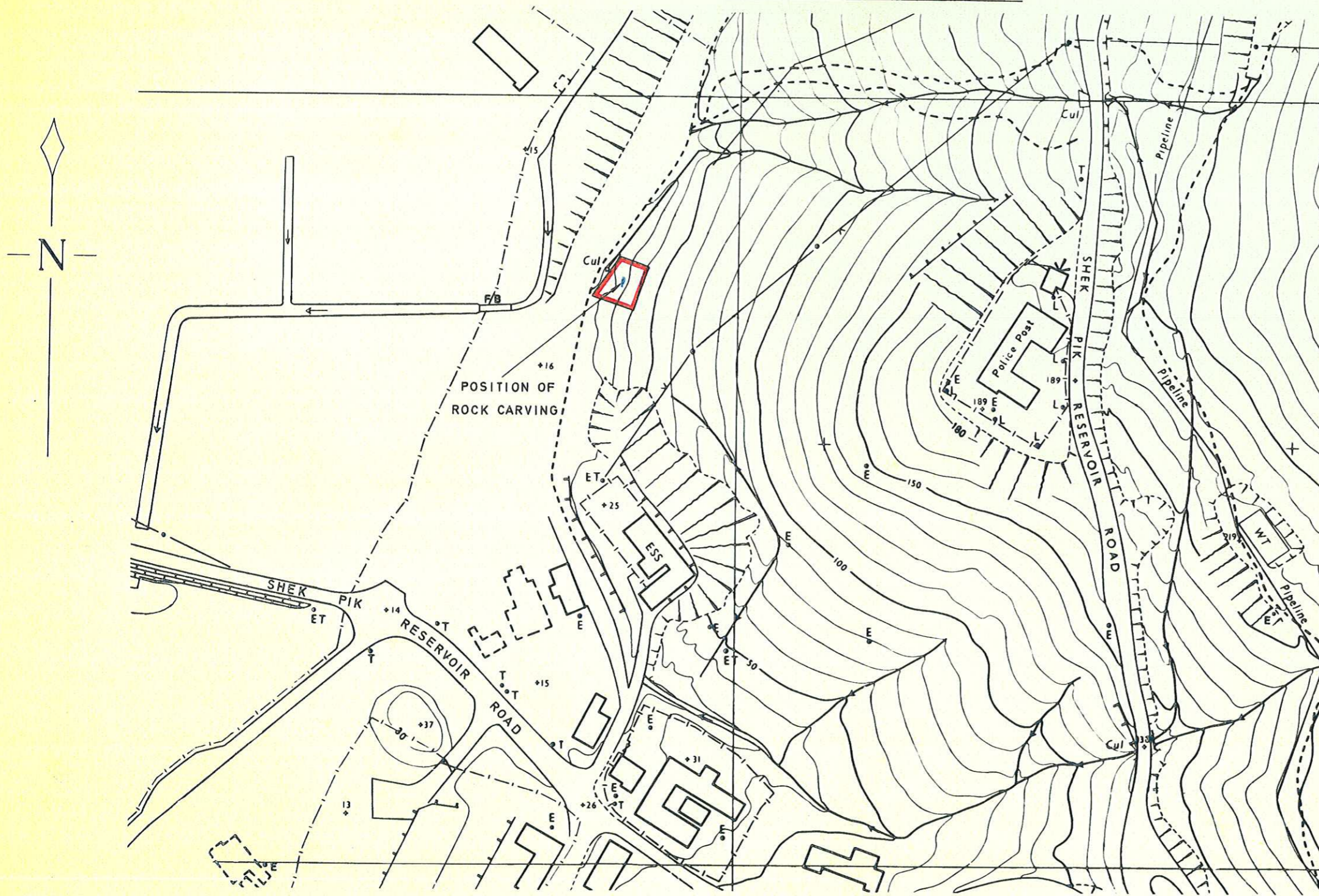


4

ANTIQUITIES & MONUMENTS ORDINANCE (CAP. 53)
PLAN OF ANCIENT ROCK CARVING AT SHEK PIK, LANTAU ISLAND
DEPOSITED IN THE DISTRICT LAND OFFICE, ISLANDS, UNDER SEC. 3 (4)

SERIAL No. NTM 4



EDGED RED AREA 115 m² (ABOUT)

(Heights in feet)
 SCALE 1:1200

Crown Lands & Survey Office, Hong Kong.

Shen/outs
 SECRETARY FOR THE NEW TERRITORIES
 DATE 13/3/79