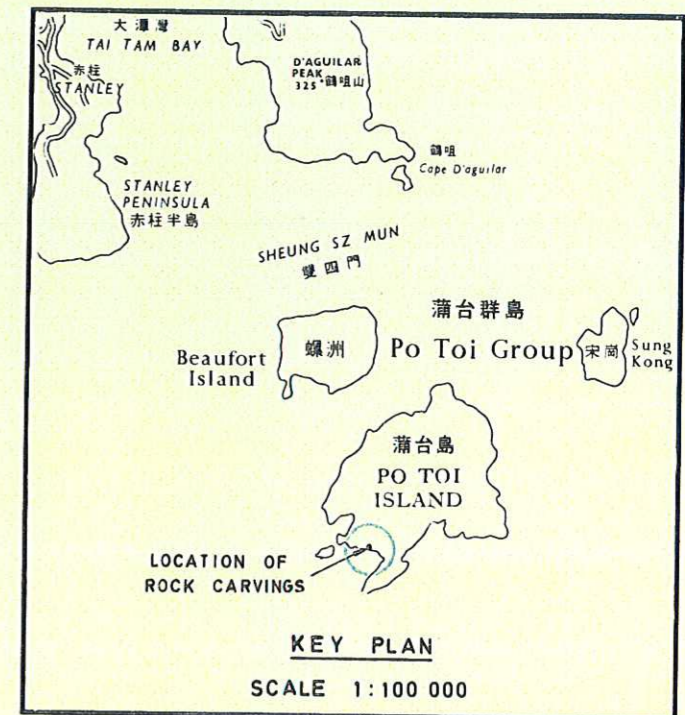
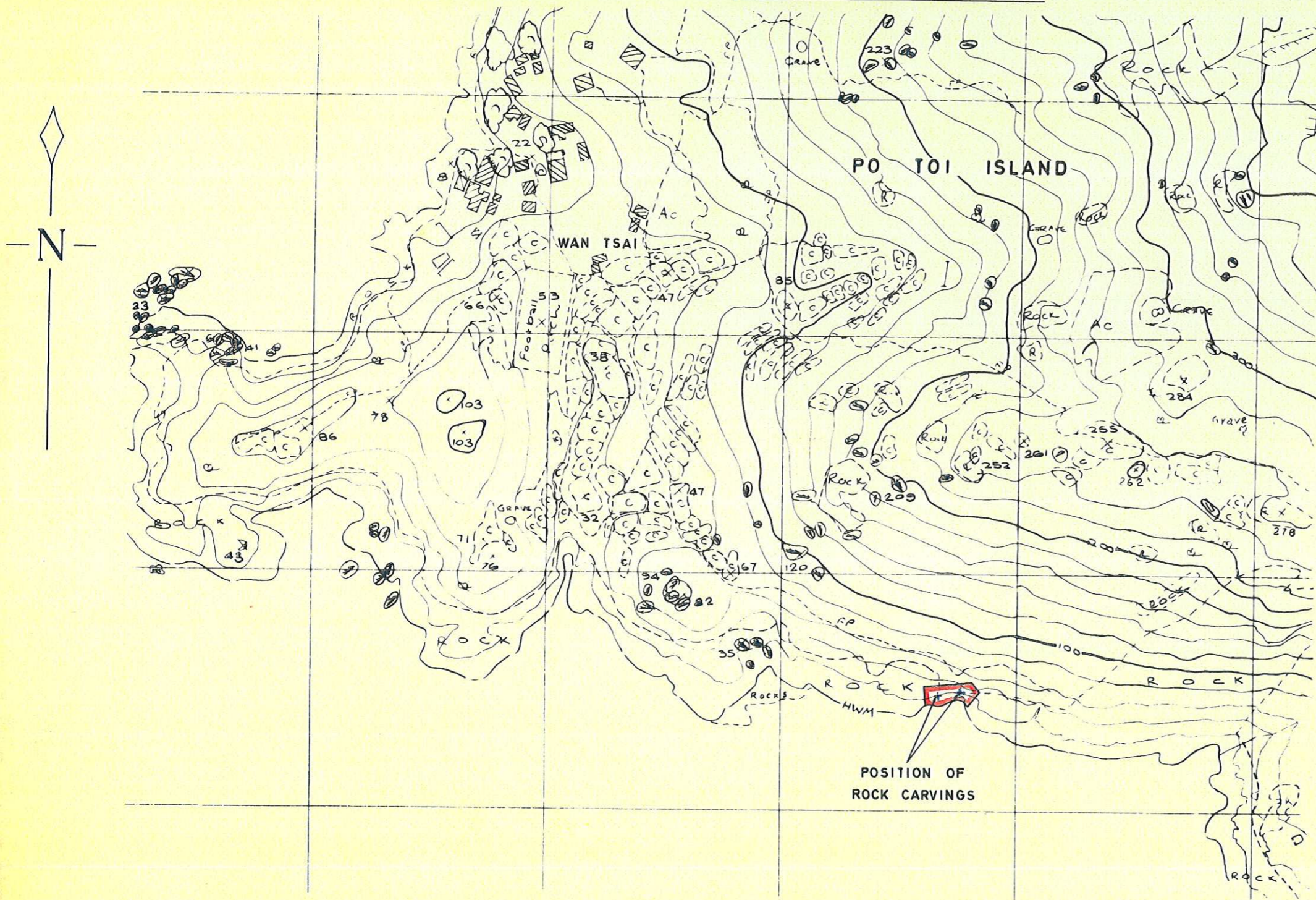


ANTIQUITIES & MONUMENTS ORDINANCE (CAP. 53)
PLAN OF ANCIENT ROCK CARVINGS AT PO TOI ISLAND
DEPOSITED IN THE DISTRICT LAND OFFICE, ISLANDS, UNDER SEC. 3 (4)

SERIAL No. NTM 5



EDGED RED AREA 260 m² (ABOUT)

(Heights in feet)
 SCALE 1:2400

Crown Lands & Survey Office, Hong Kong.

D. Alen/outs
 SECRETARY FOR THE NEW TERRITORIES
 DATE 13/3/79