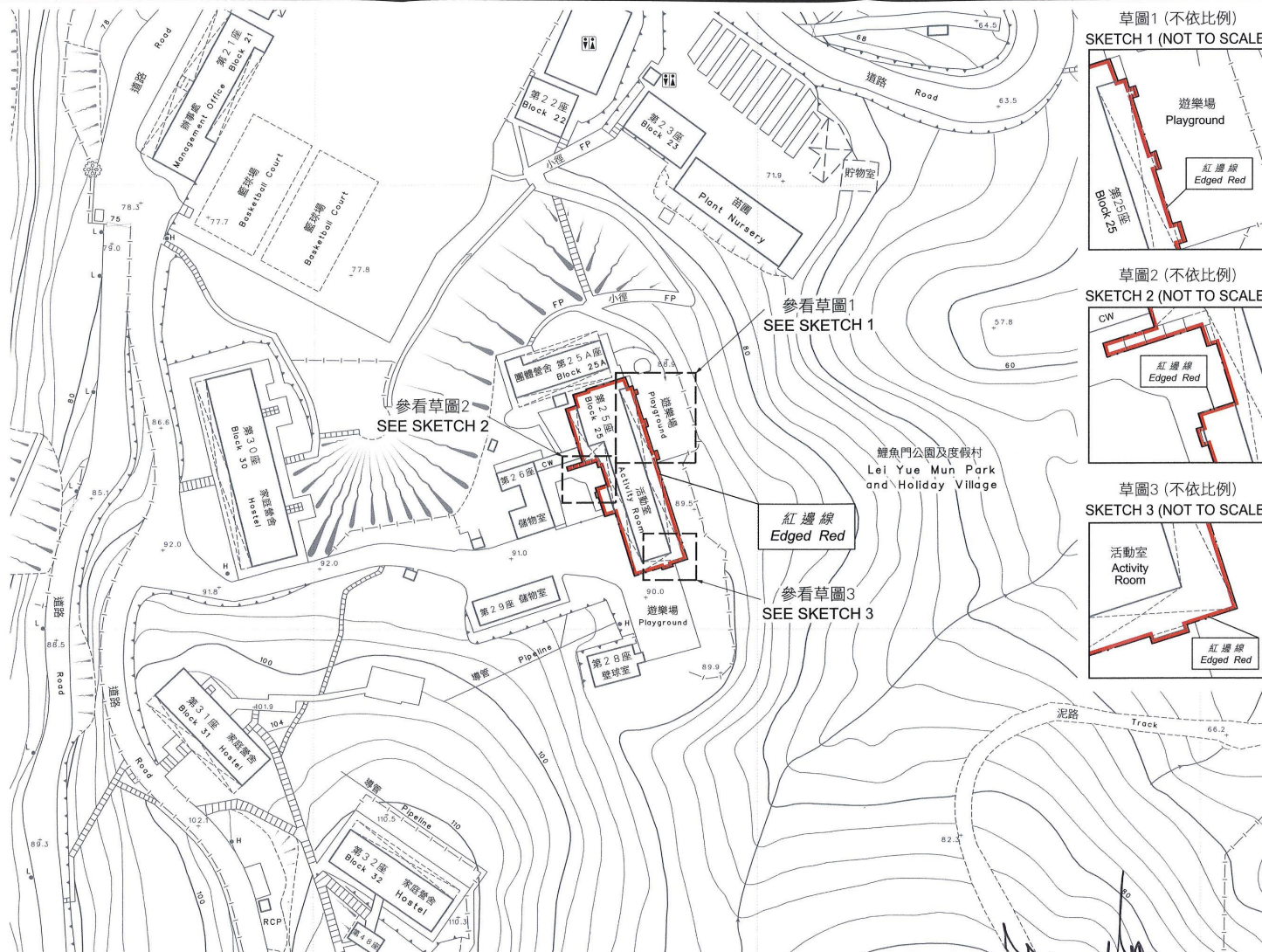


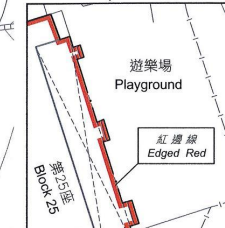
位置 LOCATION



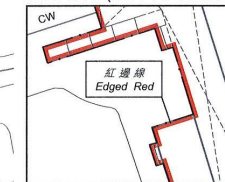
比例 SCALE 1:20 000



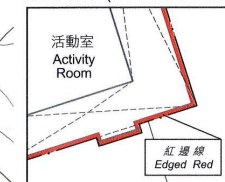
草圖1 (不依比例)
SKETCH 1 (NOT TO SCALE)



草圖2 (不依比例)
SKETCH 2 (NOT TO SCALE)



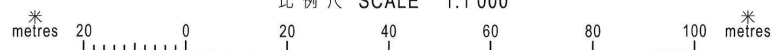
草圖3 (不依比例)
SKETCH 3 (NOT TO SCALE)



以紅邊線標示的面積約為 616 平方米

EDGED RED AREA 616 SQUARE METRES (ABOUT)

比例尺 SCALE 1:1 000



(陳茂波 Paul M P Chan)
發展局局長 Secretary for Development
日期 Date 16 May 2016

只作識別用 FOR IDENTIFICATION PURPOSES ONLY

地政總署 港島測量處
District Survey Office, Hong Kong
Lands Department

© 香港特別行政區政府 — 版權所有 Copyright reserved - Hong Kong SAR Government

古物及古蹟條例 (第53章)
根據第3(4)條存放於土地註冊處的香港柴灣柴灣道75號
舊鯉魚門軍營第25座圖則
ANTIQUITIES AND MONUMENTS ORDINANCE (CAP. 53)
PLAN OF BLOCK 25 OF THE OLD LEI YUE MUN BARRACKS
AT 75 CHAI WAN ROAD, CHAI WAN, HONG KONG
DEPOSITED IN THE LAND REGISTRY UNDER SECTION 3(4)

檔案編號 File No. DSO/HK 14/2/5/2 & DSO/HK W2451
測量圖編號 Survey Sheet No. 11-SE-14A
發展藍圖編號 Layout Plan No. --
參考圖編號 Reference Plan No. --
圖則編號 PLAN No. HKM10002a

日期 Date: 05/05/2016