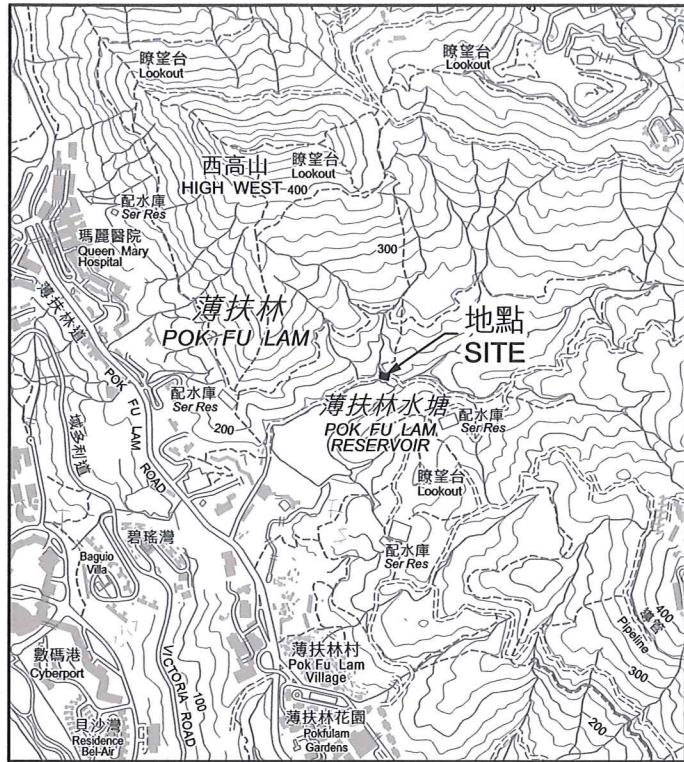
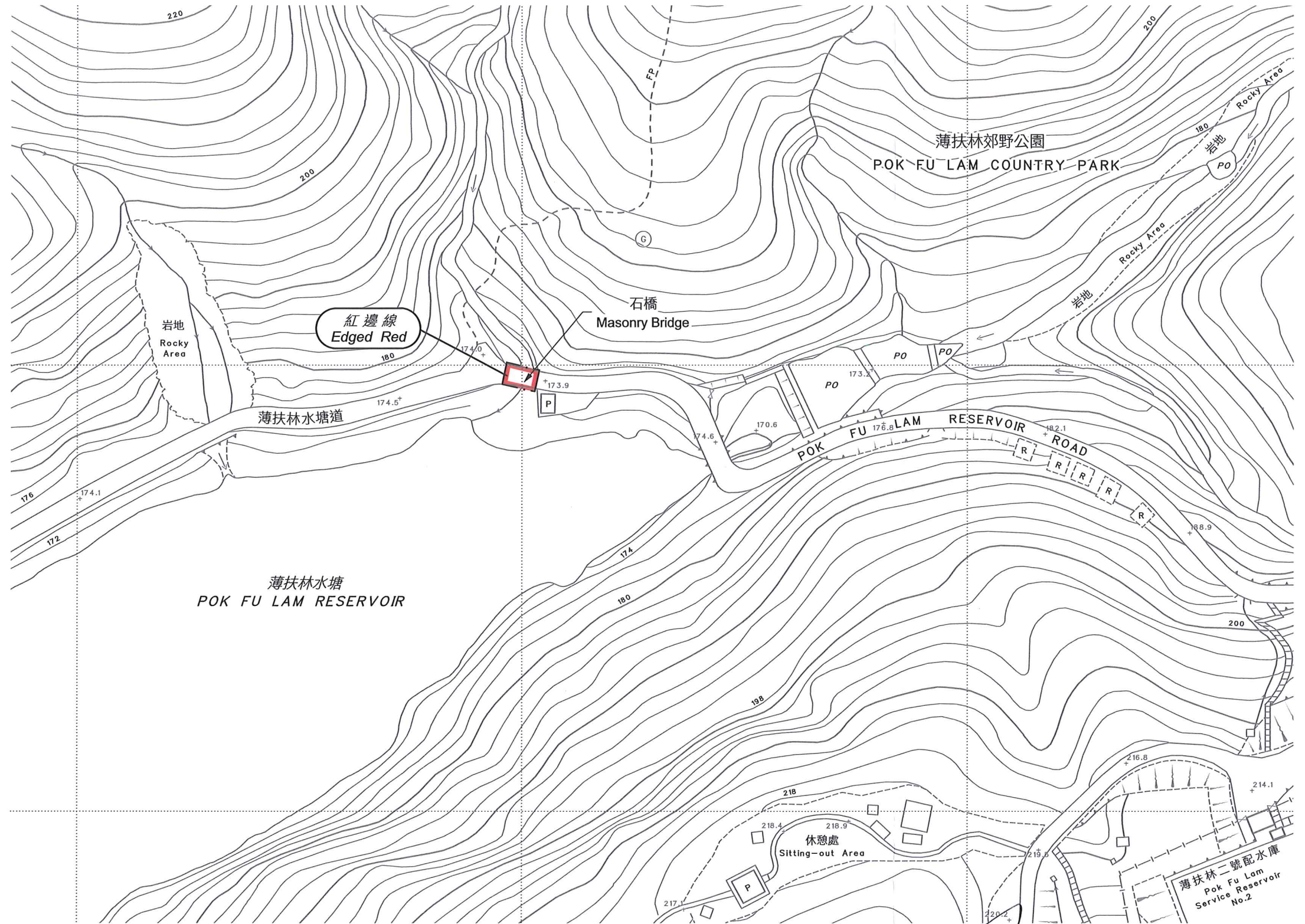


位置 LOCATION



比例 SCALE 1:20 000



薄扶林水塘
POK FU LAM RESERVOIR

石橋
Masonry Bridge

紅邊線
Edged Red

薄扶林水塘道

POK FU LAM RESERVOIR ROAD

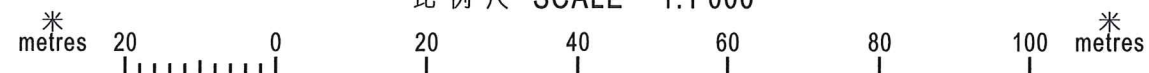
薄扶林郊野公園
POK FU LAM COUNTRY PARK

薄扶林二號配水庫
Pok Fu Lam Service Reservoir No.2

休憩處
Sitting-out Area

以紅邊線標示的面積約為 37 平方米
EDGED RED AREA 37 SQUARE METRES (ABOUT)

比例尺 SCALE 1:1 000



(Signature)
(黃偉綸 Michael Wong)
發展局局長 Secretary for Development
日期 Date 13 May 2020

只作識別用 FOR IDENTIFICATION PURPOSES ONLY

地政總署 港島測量處
District Survey Office, Hong Kong
Lands Department

古物及古蹟條例 (第53章)
根據第3(4)條存放於土地註冊處的位於香港薄扶林薄扶林水塘的石橋的圖則
ANTIQUITIES AND MONUMENTS ORDINANCE (CAP. 53)
PLAN OF THE MASONRY BRIDGE OF POK FU LAM RESERVOIR, POK FU LAM, HONG KONG
DEPOSITED IN THE LAND REGISTRY UNDER SECTION 3(4)

檔案編號 File No. LD DSO/HK 14/2/5/2 Pt. 2
測量圖編號 Survey Sheet No. 11-SW-17B
發展藍圖編號 Layout Plan No. --
參考圖編號 Reference Plan No. --
圖則編號 PLAN No. HKM10608