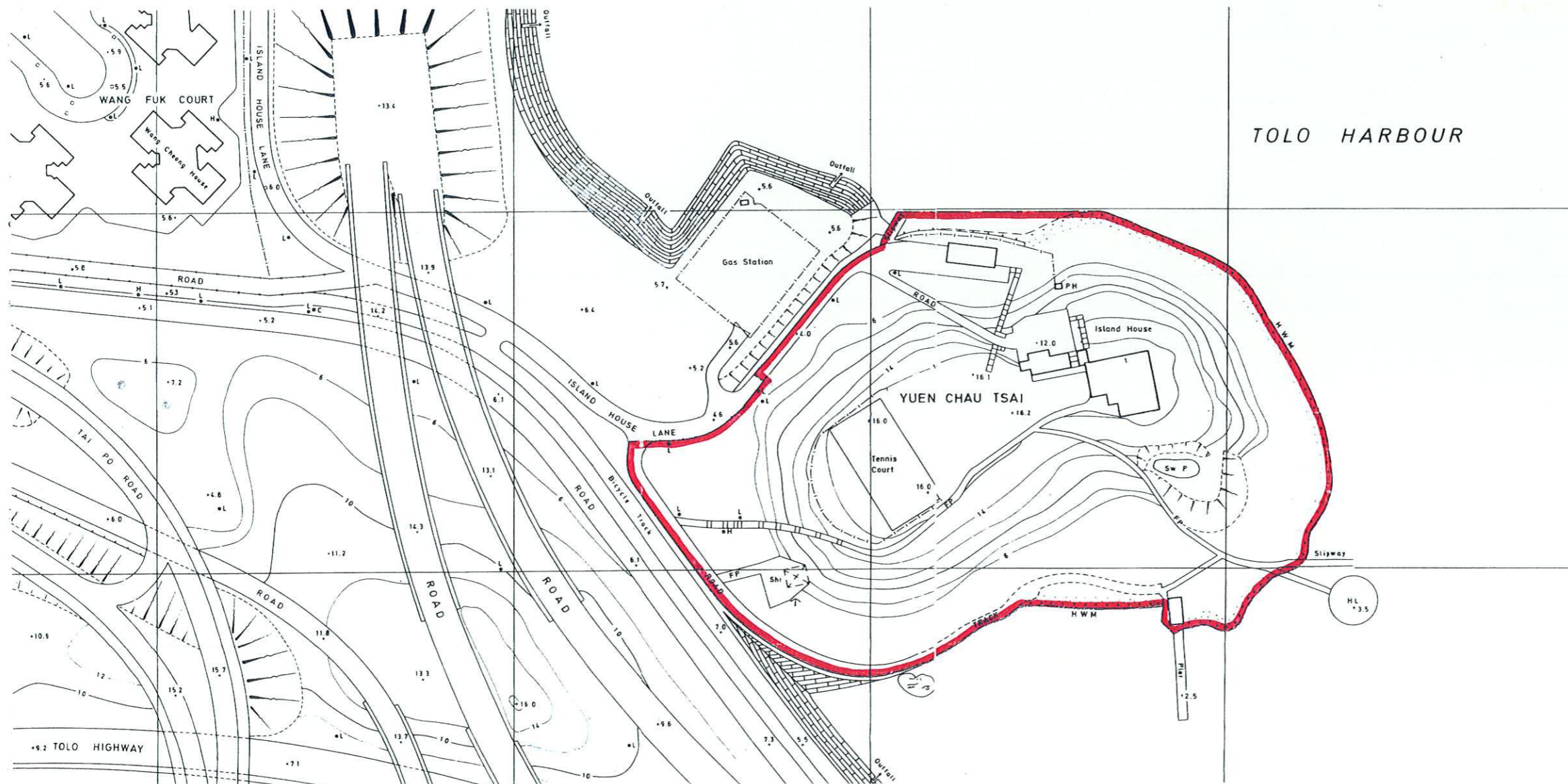


ANTIQUITIES & MONUMENTS ORDINANCE (CAP.53)
PLAN OF ISLAND HOUSE, (YUEN CHAU TSAI) TAI PO, NEW TERRITORIES
DEPOSITED IN THE DISTRICT LAND OFFICE, TAI PO, UNDER SEC. 3(4)
SERIAL No. NTM39



SCALE 1 : 20 000

EDGED RED AREA 75 HECTARES (ABOUT)

SCALE 1 : 1 000

