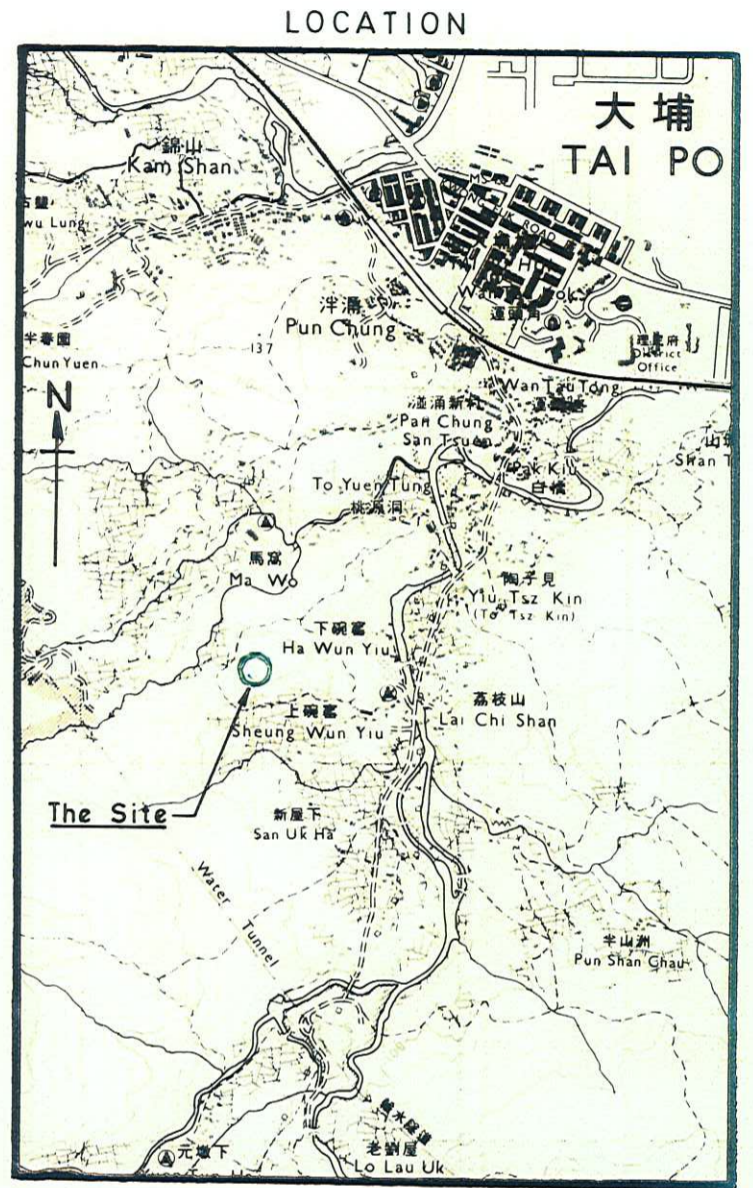
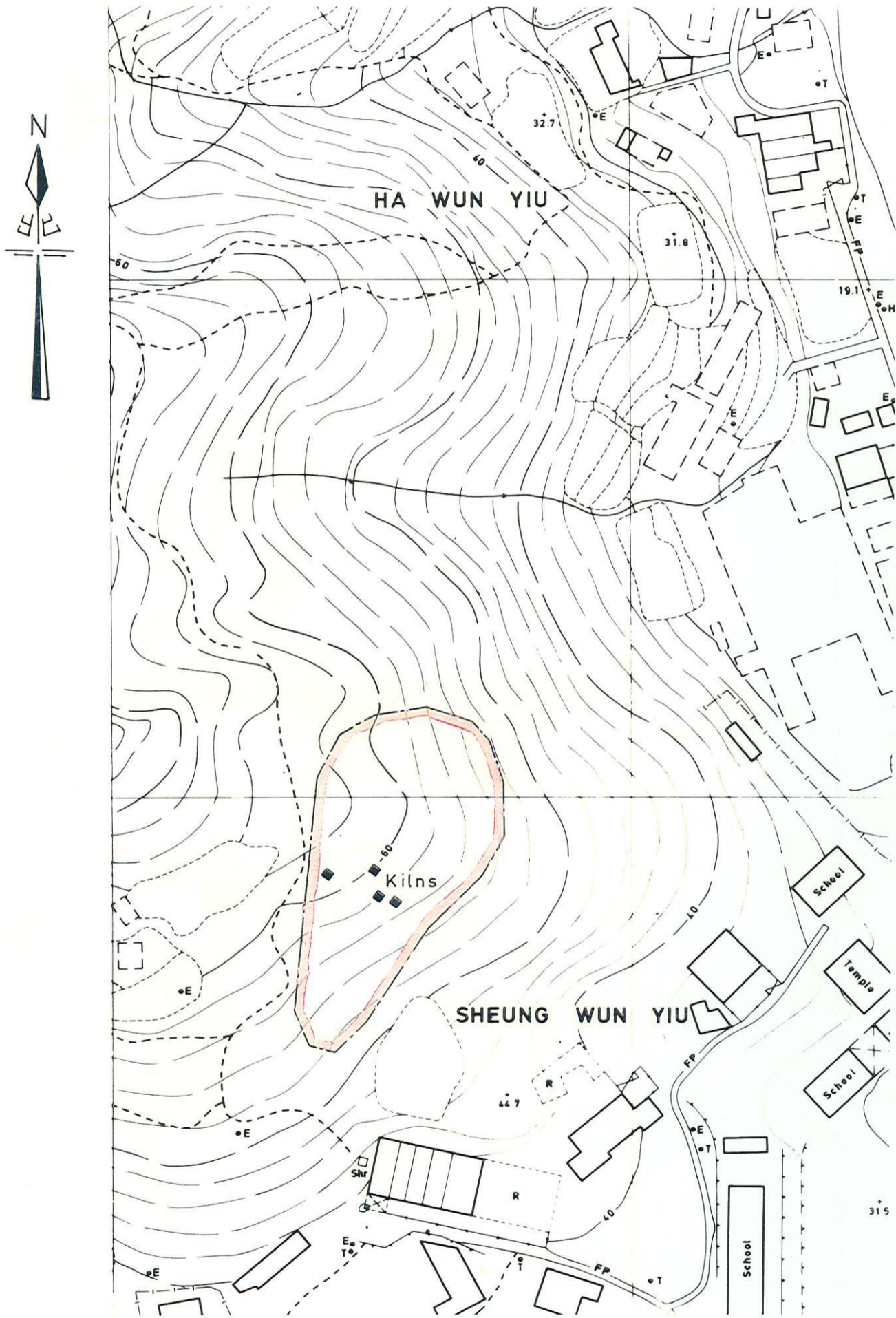


ANTIQUITIES & MONUMENTS ORDINANCE (CAP. 53)

PLAN OF POTTERY KILN SITE AT WUN YIU, TAI PO, NEW TERRITORIES.  
DEPOSITED IN THE DISTRICT LAND OFFICE, TAI PO, UNDER SEC. 3(4)

SERIAL No. NTM 21



SCALE 1:20000

EDGED RED AREA 1727 SQUARE METRES