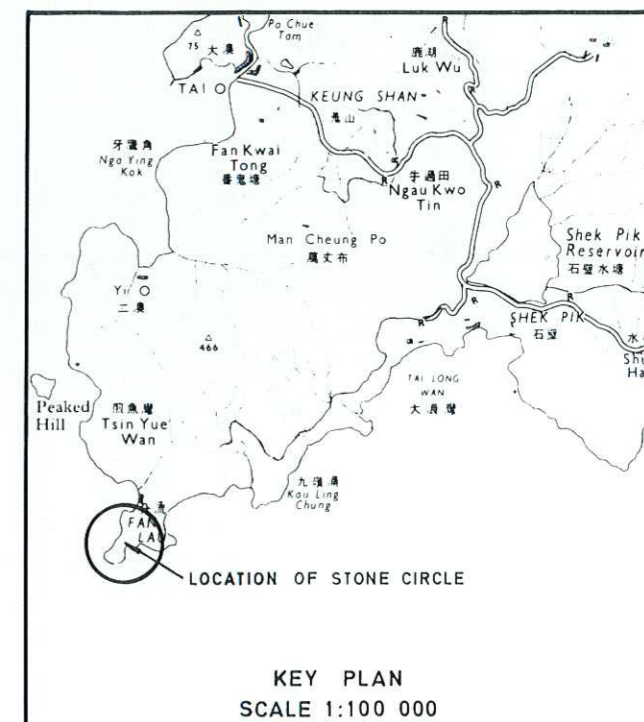
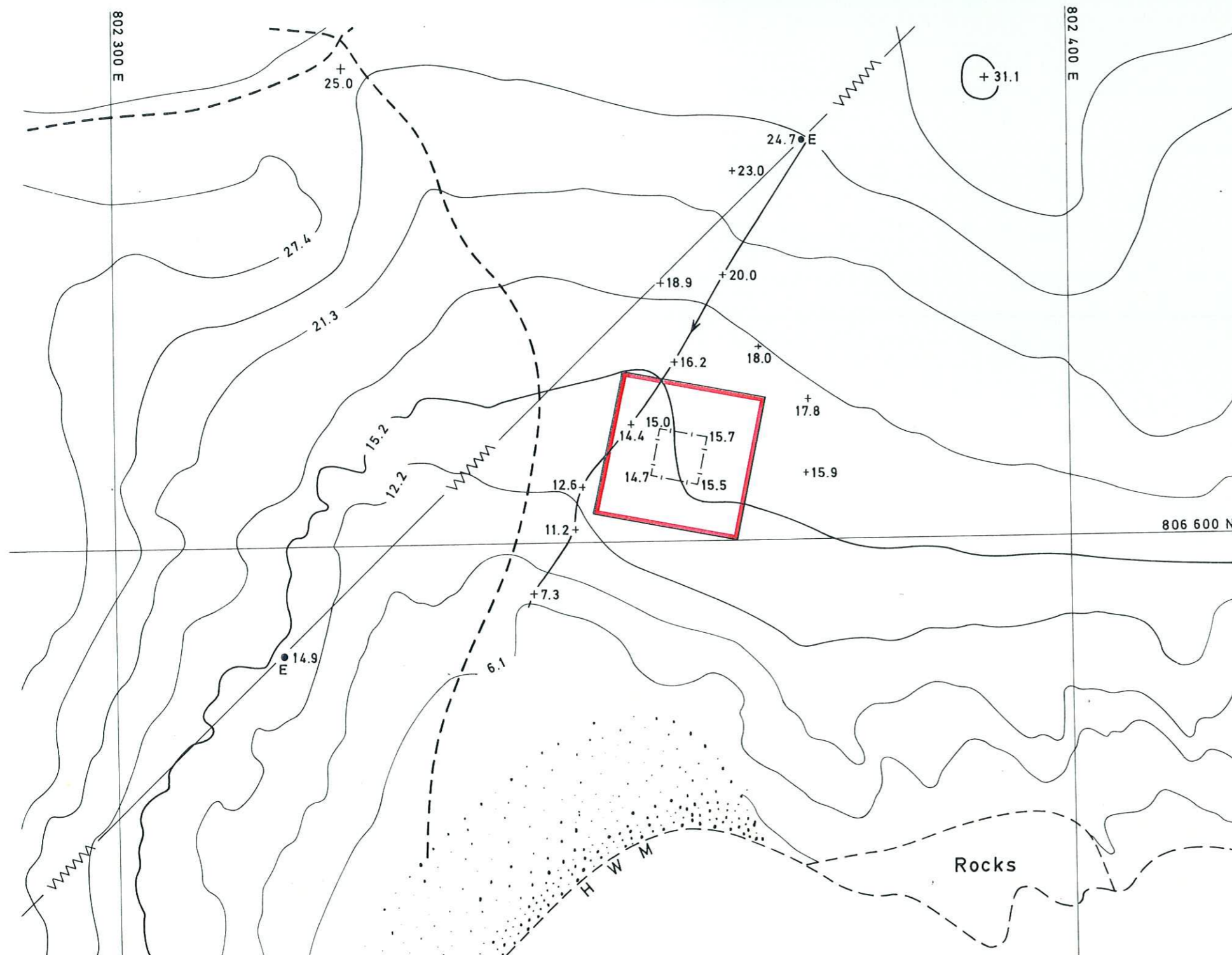


ANTIQUITIES AND MONUMENTS ORDINANCE (CAP. 53)

PLAN OF STONE CIRCLE AT FAN LAU, LANTAU ISLAND

DEPOSITED IN THE DISTRICT LAND OFFICE, ISLANDS UNDER SEC.3(4)

SERIAL No. NTM 23



EDGED RED AREA 225 m² (ABOUT)

SCALE 1:500

METRES 10 0 10 20 30 40 50 METRES

Prepared by
Survey Division, Lands Department

Hong Kong Districts Lands Office
Lands Department

B.D. Wilson
DIRECTOR OF URBAN SERVICES
DATE 22/4/83