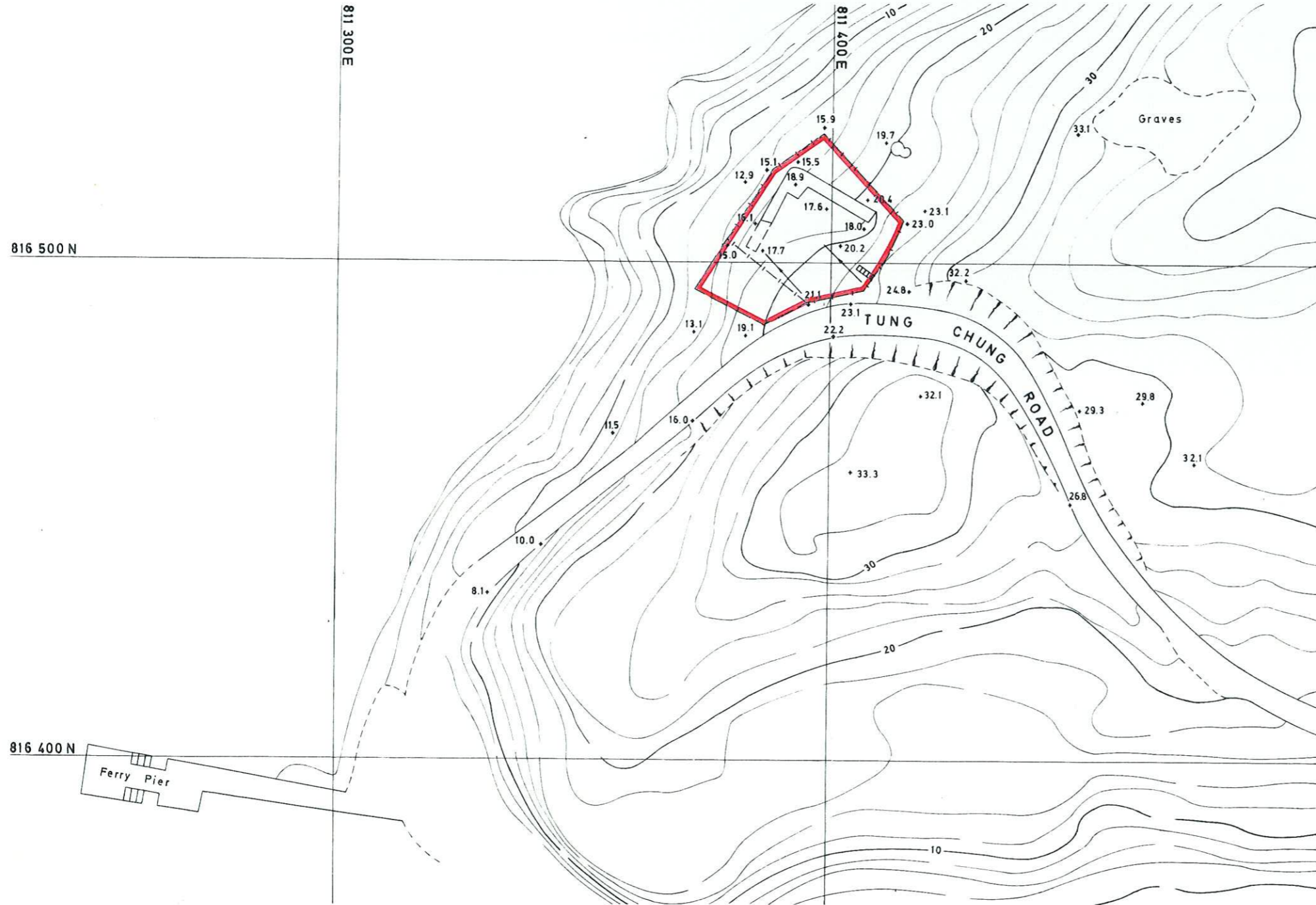
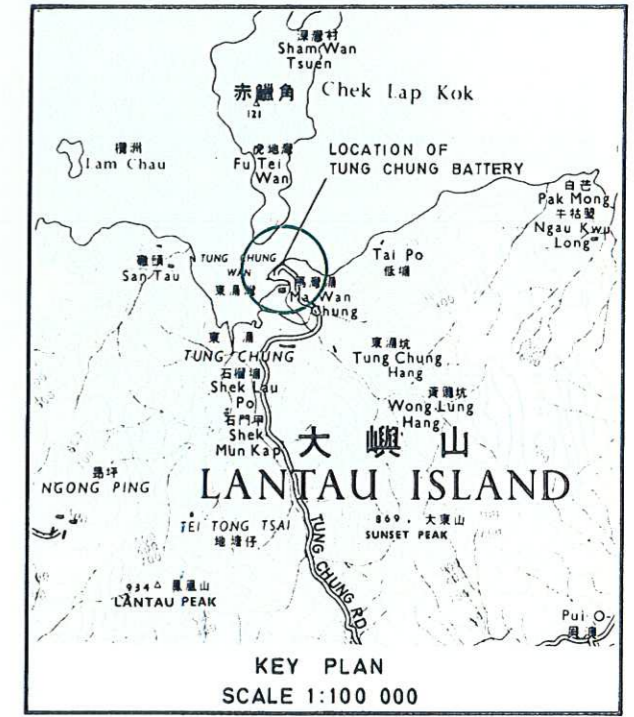


ANTIQUITIES AND MONUMENTS ORDINANCE (CAP. 53)
PLAN OF TUNG CHUNG BATTERY AT TUNG CHUNG, LANTAU ISLAND
DEPOSITED IN THE DISTRICT LAND OFFICE, ISLANDS UNDER SEC. 3(4)
SERIAL No. NTM18



PROPOSED



EDGED RED AREA 890 m² (ABOUT)

SCALE 1:1 000



Prepared by
Survey Division, Lands Department

Hong Kong Districts Lands Office
Lands Department

B. D. W. Chan
 DIRECTOR OF URBAN SERVICES
 DATE 17/11/82