

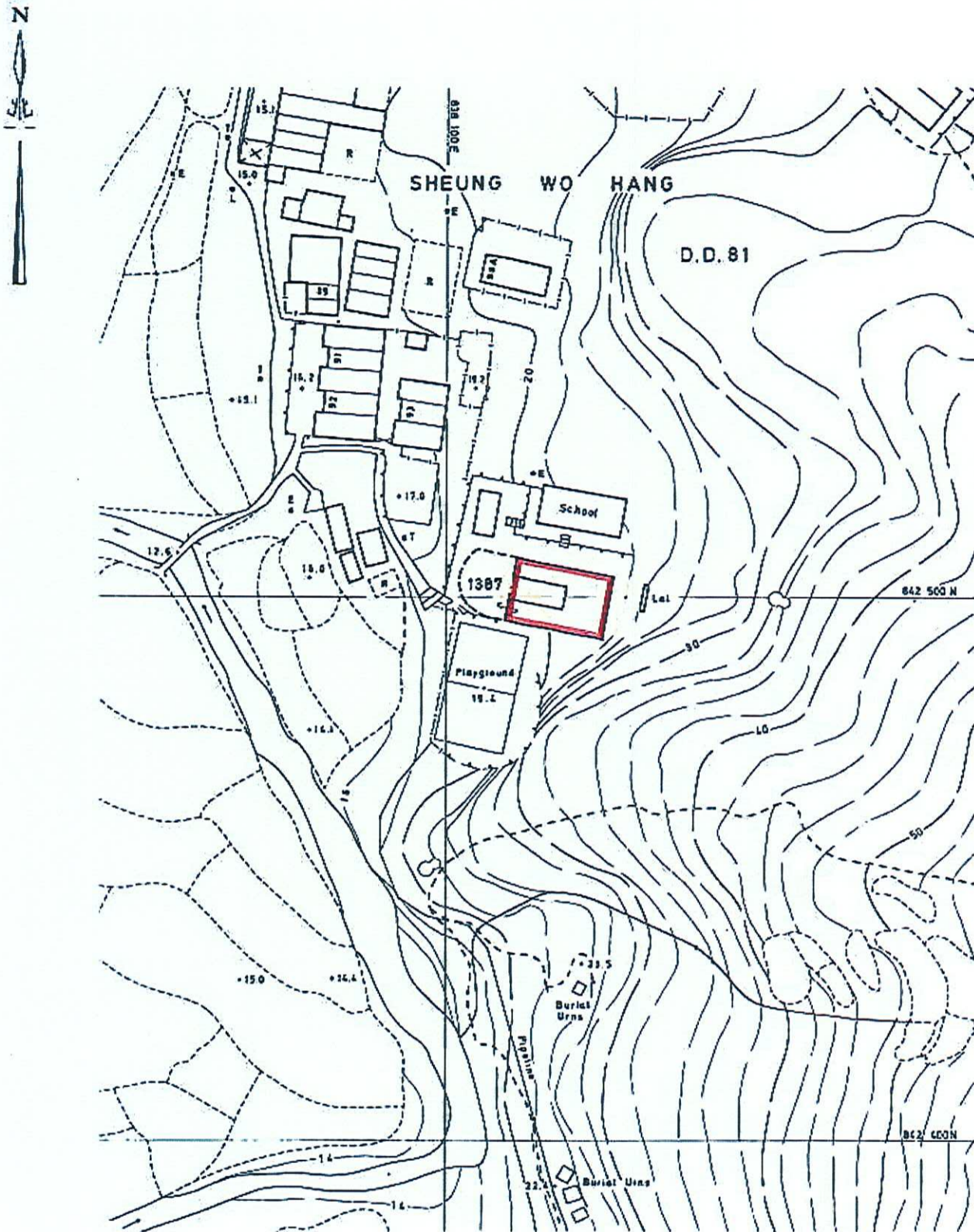
ANTIQUITIES AND MONUMENTS ORDINANCE (CAP.53)

PLAN OF KANG YUNG SHU UK AT SHEUNG WO HANG VILLAGE,

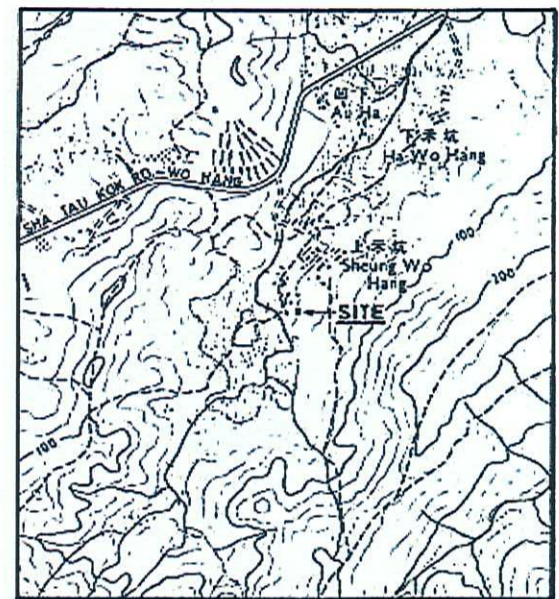
SHA TAU KOK

DEPOSITED IN THE DISTRICT LAND OFFICE, NORTH, UNDER SEC. 3(4)

SERIAL No. NTM 41



LOCATION



SCALE 1 : 20 000

EDGED RED AREA 216 SQUARE METRES (ABOUT)

SCALE 1 : 1 000



Pursuant to G.R.475, this plan has been prepared by the District Survey Office, North, Survey and Mapping Office, Buildings and Lands Department, under the Authority of the Government Land Surveyor.

Survey Sheet No. 3-NE-21C  
File No. BLD 10/13/NTS/N

*A. K. Chui*  
[ A. K. CHUI, C.B.E., J.P. ]  
Secretary for Recreation and Culture

Date 12 April 1991