

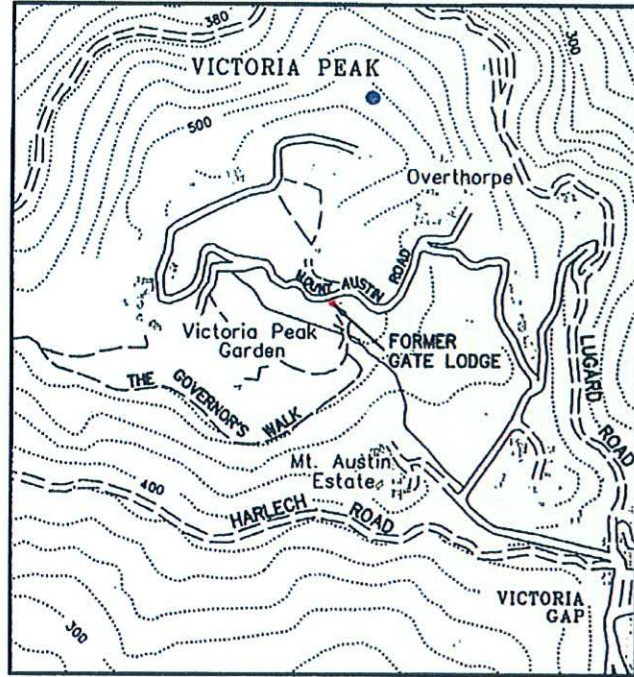
ANTIQUITIES AND MONUMENTS ORDINANCE (CAP. 53)

PLAN OF THE FORMER GATE LODGE ON MT. AUSTIN ROAD, THE PEAK, HONG KONG
DEPOSITED IN THE LAND REGISTRY, VICTORIA, UNDER SEC. 3(4)

SERIAL No. HKM 21

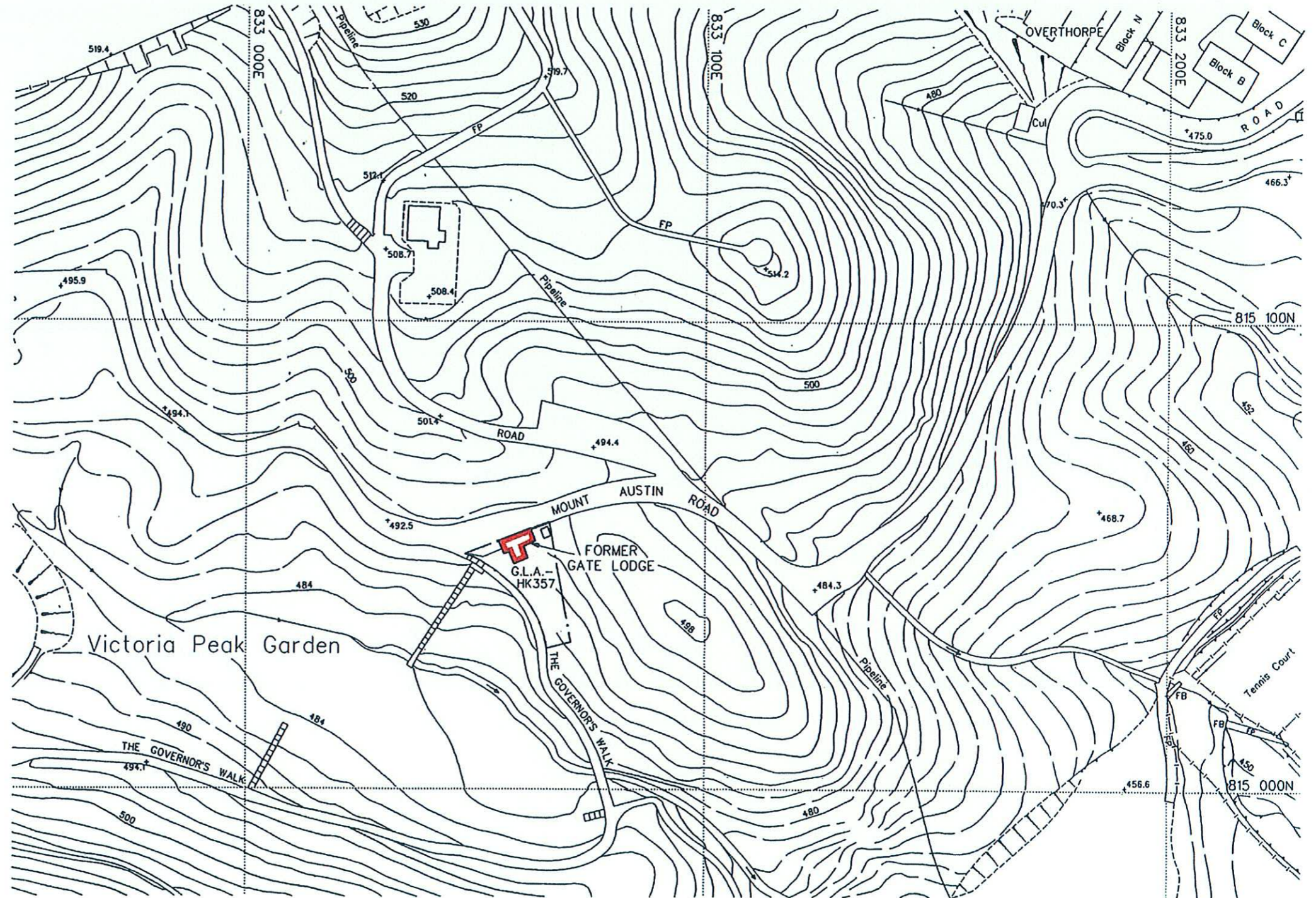


LOCATION



SCALE 1 : 10000

EDGED RED AREA 31 SQUARE METRES (ABOUT)



SCALE 1:1000



SECRETARY FOR RECREATION & CULTURE

DATE 16 March 1995



Pursuant to GR475, this plan No. MH5217 has been prepared by the District Survey Office, Hong Kong West, Survey and Mapping Office, Lands Department, under the Authority of the Principal Government Land Surveyor.