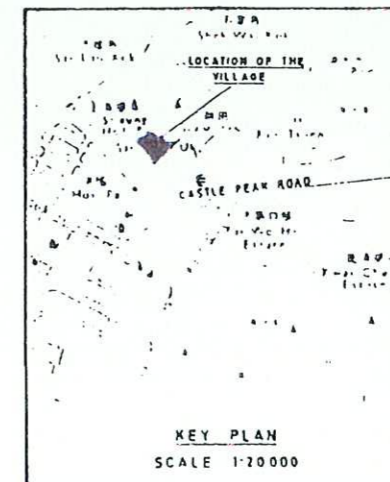
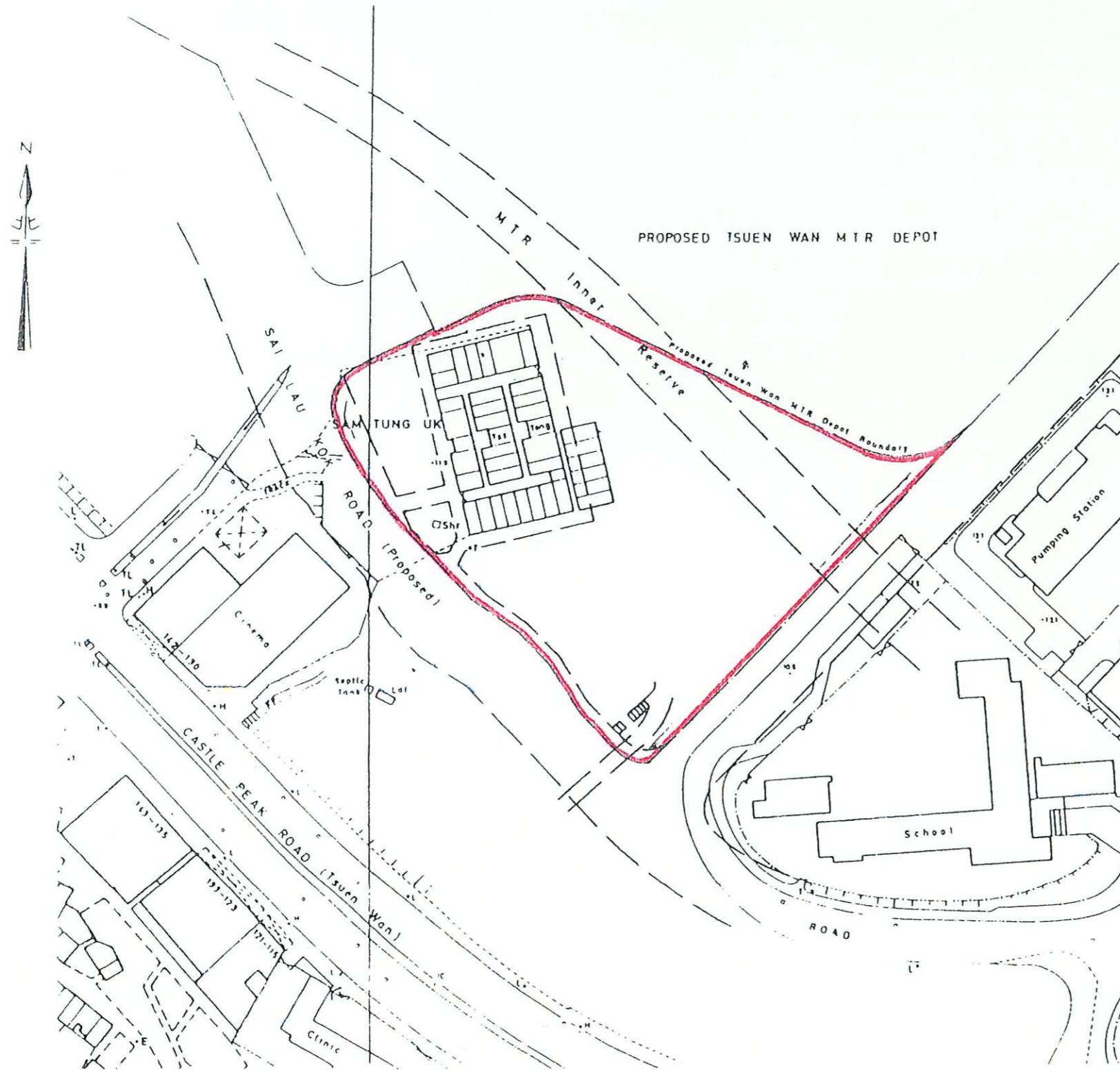


ANTIQUITIES & MONUMENTS ORDINANCE (CAP. 53)
PLAN OF SAM TUNG UK WALLED VILLAGE AND OPEN SPACE, TSUEN WAN, NEW TERRITORIES
DEPOSITED IN THE DISTRICT LAND OFFICE, TSUEN WAN, UNDER SEC. 3(4)
SERIAL No. NTM 12



AREA 10398 m² (ABOUT)

Spot heights shown on this plan should be verified before use.

(Heights in metres)
SCALE 1:1000

Le Ka
 SECRETARY FOR THE NEW TERRITORIES
 DATE 3rd Mar, 1981