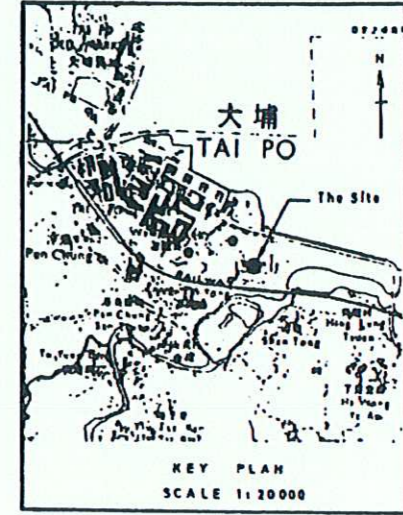
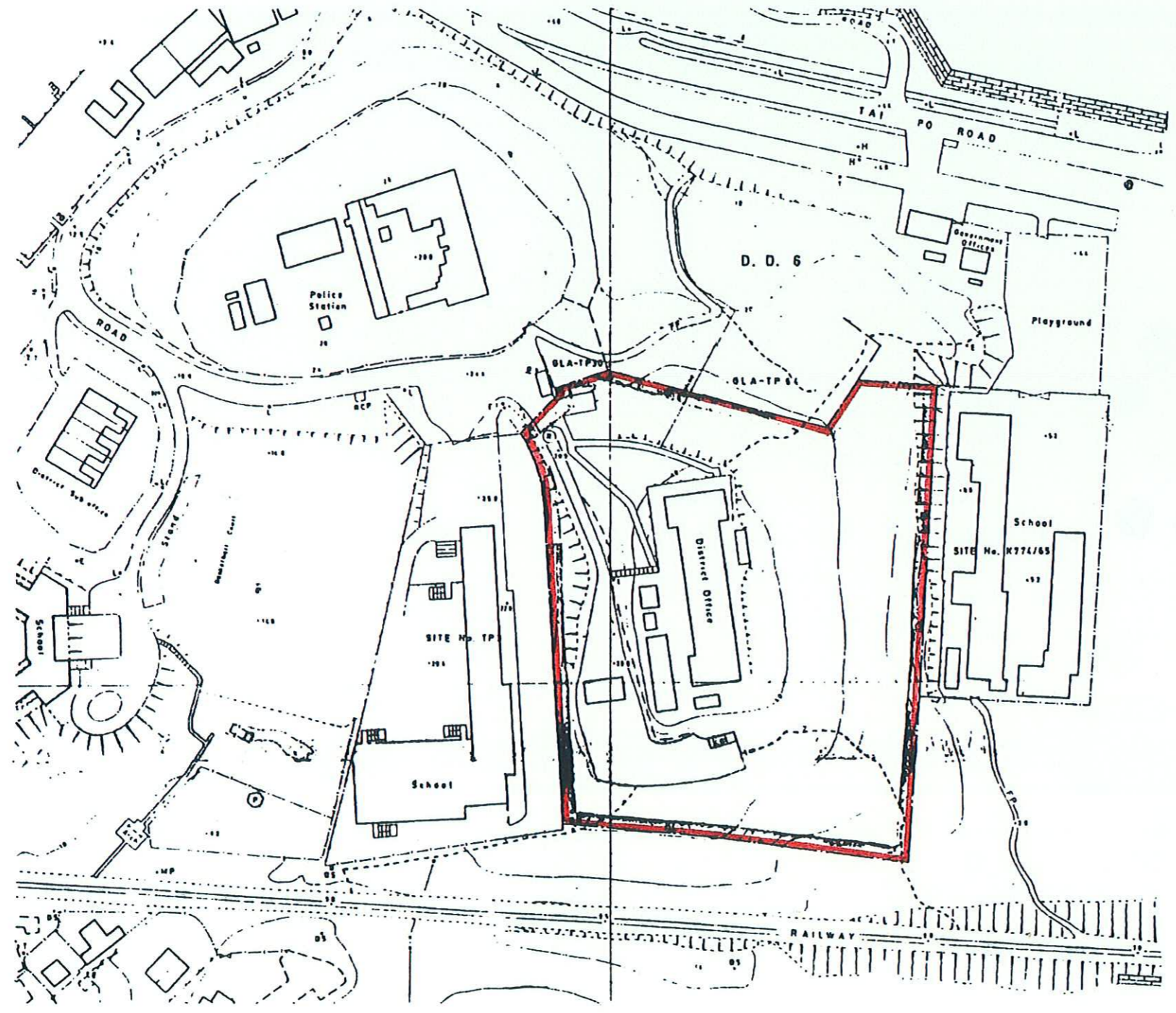


ANTIQUITIES & MONUMENTS ORDINANCE (CAP.53)
PLAN OF OLD TAI PO DISTRICT OFFICE, TAI PO, NEW TERRITORIES.
DEPOSITED IN THE DISTRICT LAND OFFICE, TAI PO, UNDER SEC. 3(1)

SERIAL No. NTM 14



EDGED RED AREA 1.468 ha.