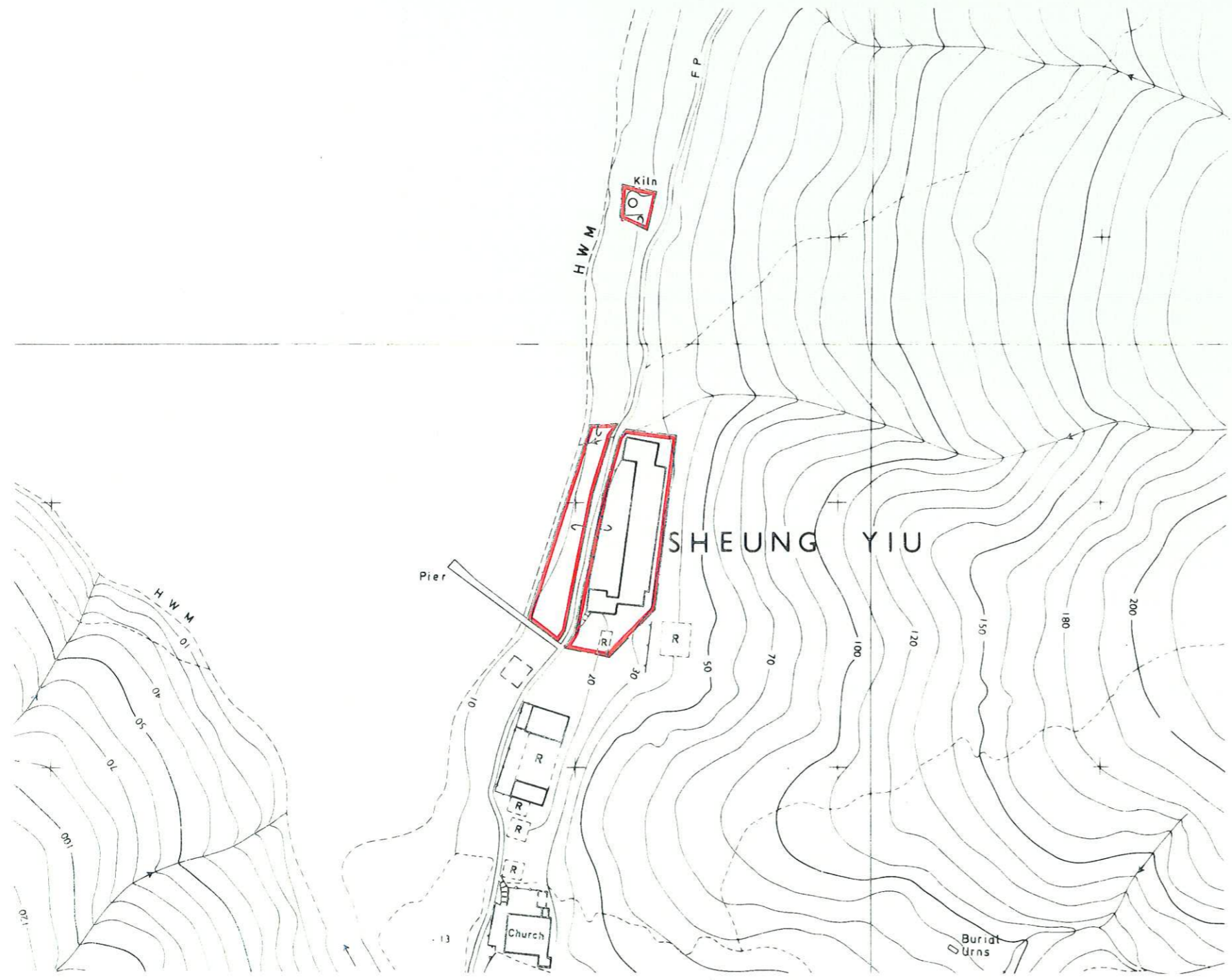
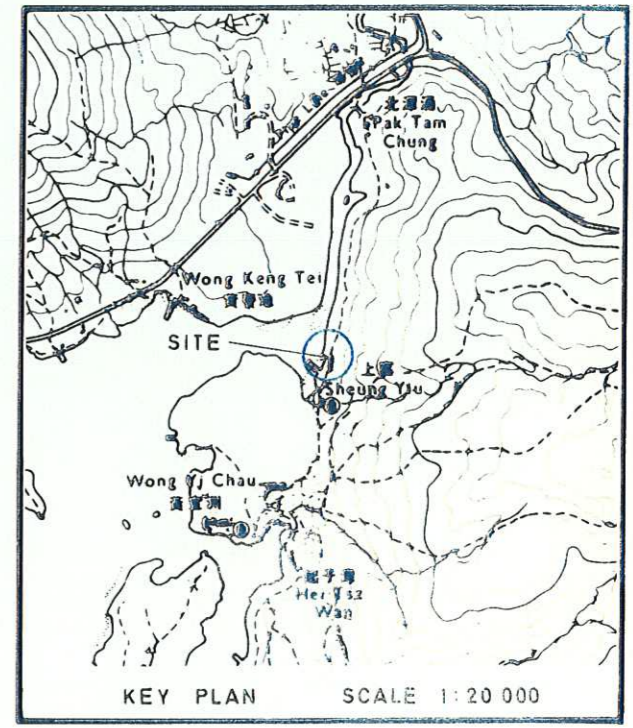


ANTIQUITIES & MONUMENTS ORDINANCE (CAP. 53)
PLAN OF MONUMENT IN SHEUNG YIU VILLAGE
DEPOSITED IN THE DISTRICT LAND OFFICE, SAI KUNG, UNDER SEC. 3 (4)

SERIAL No. NTM 17



(Heights in feet)
 SCALE 1:1 200



EDGED RED AREA · 1 190 m² (ABOUT)

[Signature]
 SECRETARY FOR THE NEW TERRITORIES
 DATE 16th Oct, 1991